



# Lake Hartwell Association, Inc

Fall, 2008

Volume XX, Number 4

## Letter from the President

Submitted by Joe Brenner

## Inside this issue



As I write this, our lake level is fast approaching 15 feet below full pool. Once this level is reached, flows from Hartwell will increase significantly. At this level, Thurmond has only 5 feet of conservation pool remaining while Hartwell has 20 feet; thus Hartwell draw will become 4 to 1 vs. Thurmond, so both lakes reach the bottom of their conservation pools at the same time. We fully expect the lake to hit a record low level this fall. If the severity of the drought continues, Hartwell could reach level 4 (bottom of conservation pool) in spring 2009. That's 35 feet down!

We are in completely uncharted territory here. In almost 50 years of operation, even before there was a "drought plan" the lake level never hit 18 feet down.

We seem to be in the center of a rainless black hole. But there are signs that things are improving. We have certainly seen an increase in tropical activity this year. The weather services have moved us into a "neutral" (normal rain) forecast for this winter. We did see over a foot increase after Fay. To answer a few questions we've received, Duke Power did not release any of that flow from Keowee, so we essentially lost the rainfall benefit of 50% of our watershed.

As I have written before, no one really expected us to ever be in this situation when the current drought plan was developed. But now the reality of virtually no flow going downstream at level 4 is sinking in. We asked the Corps and the two states last year to at least reduce flows during winter months when the basin is under less stress. Finally this summer, Georgia made a proposal to reduce flows this winter to 3100CFS from the current 3600 and also proposed a "transition" plan prior to hitting level 4. The reason that the proposed reduction is not greater is that a larger change would

require a full environmental impact study per federal regulations which would take several years to complete. This proposal needs to be agreed upon by South Carolina and federal agencies; then the Corps must do an environmental assessment and go through a public notice period. Time is running out! The Corps has shown no opposition to reducing basin flows, but it's up to the states to get things moving. Please contact you local state representatives, particularly in South Carolina, to let them know we need the agencies to move

urgently on this effort.

<b>LHA FALL MEETING &amp; FORUM October 23, 2008 7:00 pm Anderson Civic Center</b>	2
Ask the Corps	2
The Savannah River Basin Drought and Flow Releases	3
Tornado Damage at Seminole Point	4
Safe Boating Course	4
LHA Covekeeper Pilot Project Is Underway	5
Ethanol Damage to Boat Engines	6
Life Jacket Loaner Program	6
LHA Community & Business Members!	7
New LHA Members	7

### LHA Mission Statement

**We** will develop and establish the Lake Hartwell Association as an organization that promotes and encourages cooperation, assistance and information exchange among those concerned with Hartwell Lake and the Savannah River Basin.

**We** will provide a forum to collectively represent our membership on issues that pertain to the development, preservation and comprehensive management of Hartwell Lake.

**We** will collect and distribute information on matters affecting Hartwell Lake.

**We** will maintain liaisons and communications between the Lake Hartwell Association and educational, governmental, scientific and other communities.

LHA has consistently advocated for a sound science approach to water management. Basin issues are complex and require a knowledgeable and fact-based strategy to achieve results. Frankly downstream interests, particularly on the Georgia side, have the greatest influence within the states. They must be convinced that the lower basin can get by with less flow and that keeping more water in the lakes in time of drought protects their interests. Though the perception is that the Corps has complete control over basin flows, the reality is that both states and many agencies have a hand in the process. Though it won't happen in time for the current drought, we must see completion of the Comprehensive Basin Study. This project has been held up for years due to Corps funding shortfalls related to Iraq and Katrina/New Orleans (and low priority by the current administration). The study is essential to make the case that the economy of the Savannah Lakes region is more important than power production in normal times and to create a new drought plan that preserves water in the lakes as long as possible to protect the entire basin. We must not lose sight of the need for this study once the current drought is over or we'll be right back in the same place next time.

There is also a great need for an interstate compact to allocate water resources along the Savannah. Droughts have a way of highlighting water conflicts as you can see with all the lawsuits filed over the operation of Lake Lanier and the Chatahoochee. This could have all been avoided decades ago in a more rational fashion. We certainly hope that Georgia and South Carolina can take this as a lesson and work to achieve a reasonable compromise for the Savannah. The governors

(Continued on page 2)

Lake Hartwell  
Association, Inc.

P. O. Box 312  
Fair Play, SC  
29643

(864) 224-LAKE

**OFFICERS &  
DIRECTORS**

**Officers**

Joe Brenner,  
*President*

vacant,  
*Vice President*

Herb Burnham,  
*2nd VP,*

Mike Massey,  
*Past-President*

Jim Bushey,  
*Treasurer*

Pam Huntley,  
*Secretary*

**Directors &  
Committee  
Chairs**

Pat Goran,  
*Legislative*

Dr. Larry Dyck,  
*Technical*

Jim Gardner,  
*Publications*

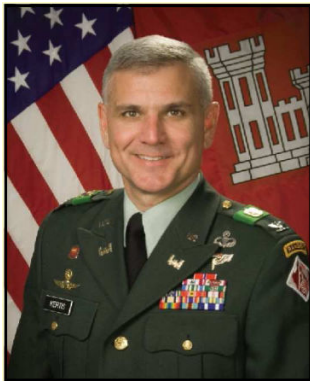
Ruth Anne  
Maciag,  
*Program/  
Publicity*

Dan Ray, *Safety*

Vern Sauer,  
*Webmaster*

Mike Massey,  
*Membership*

**JUST A REMINDER! LHA FALL MEETING & FORUM**



*Col. Edward J. Kertis, Jr.*

Col. Edward J. Kertis, Jr., District Commander, Savannah District,, U.S. Army Corps of Engineers, and Mr. Jeff Larsen, Savannah River Watershed Manager for the Georgia EPD, will be speaking at the LHA Fall Information Meeting and Forum. They will be available for your questions after their presentations.

**PLEASE DON'T FORGET! WE NEED YOU.**

The Lake Hartwell Association is pleased to invite members, friends, neighbors and all those interested in the LAKE to attend this evening of information and conversation. The more we know about the LAKE and its environment, the better equipped we are to maintain its integrity!

LHA Board of Directors and committee members will be there to let you know what we've accomplished in the last year and what we have planned for next year...AND...if you have a particular interest in one/some of our programs, we'll be happy to sign you up!

**OCTOBER 23, 2008, 7:00 P.M. ANDERSON CIVIC CENTER**

Light refreshments and door prizes, of course. **WE HOPE TO SEE YOU THERE!**

*(Continued from page 1)*

have initiated discussions by jointly forming the Savannah River Committee. Georgia has also begun implementation of a statewide water plan and South Carolina is moving in a similar direction. All these efforts will rely on the outcome of the Comprehensive Basin Study to develop agreement on resource allocation.

Ultimately an interstate compact and any re-prioritization of Corps purposes will require Congressional action. That will only happen once all parties reach a consensus based on sound science.

As for **LHA News**, congratulations to Ruth Anne Marciag who you have elected as a Director and Program Committee Chair. Also, don't forget the upcoming LHA Fall Member Meeting on October 23. The program should be very informative.

As always, send your questions and comments to [mail@lakehartwellassociation.org](mailto:mail@lakehartwellassociation.org) or call 1-864-LAKE (5253).

**LHA Calendar of Events**

10/23/08 7:00 pm  
LHA Fall Public Information Meeting @  
Anderson Civic Center

11/10/08 6:30-8:30 pm  
LHA Board Meeting @ Anderson Library

**ASK THE CORPS....**

**What is the current policy regarding withdrawals for watering on personal property?**

We are asking adjacent property owners with permits who withdraw water from Hartwell Lake for irrigation purposes to adhere to their local county guidelines or restrictions for outdoor watering.  
*Sandy Campbell, SAS*

**I have heard that the Corps is no longer renewing dock permits. Is this true?**

The USACE is still renewing Hartwell Lake dock permits. However we do have new regulations related to dock permits which may affect homeowners' plans. New regulations adopted earlier this year do not affect existing dock permit renewal. If water levels are below 4 feet at the dock/gangwalk junction the regulation does require that new docks be compliant with the newer regulations and they would not be allowed if 4 feet of water is not present. If proposed dock has at least 4 feet of water depth at the point where the gangwalk and dock connect, a permit application will be accepted for review. *Joe Melton*

## The Savannah River Basin Drought and Flow Releases

Submitted by Vernon Sauer

**Introduction.**—Northeast Georgia and much of the South Carolina Upstate are in one of the most severe droughts in recorded history. We don't need to remind anyone of this. The drought has had, and is continuing to have as I write this, a significant impact on Hartwell Lake levels. The last time we saw a completely full lake was 3 years ago in September 2005. Today the lake is about 14.5 feet below full. Each year we hope for significant spring rains or tropical storms that will fill our lake. It's hard to wish for tropical storms because of the devastating effects they have on many people, but they sometimes do bring much needed rain. For instance in August of this year, tropical storm Fay nearly inundated all of Florida but brought heavy rains to the upper reaches of the Savannah basin. Lake levels rose fairly rapidly for a couple of days, but the level of Hartwell Lake increased only about 1.5 feet. Our best hope right now is probably for heavy spring rains next year.

### About the Drought Plan.

There have been many stories on television, in newspapers and various newsletters about the management of the lakes, about excessive releases of water and other issues about how to keep our water. During a drought such as we are in now, the State and Federal Drought Contingency Plan is put into effect to meet minimum flow requirements in the Savannah River below Lake Thurmond. Cities like Augusta and Savannah, nuclear power plants, and environment needs require water. The Corps has no option but to release as per the plan with the exception that they have received permission to release at the lower rates of level 3 rather than level 1 rates since last summer. The Corps cannot legally change water releases in a drought without the consent of both states and several federal agencies. This would also require an Environmental Impact Study which would take at least two years and not help during this drought. Actually the two states have the most to say about how the Savannah waters are used. Georgia has made a proposal to South Carolina to modestly reduce flows this winter. If an agreement can be reached without a full impact study, some storage for

next season will result. You can find a copy of the Drought Contingency Plan at:

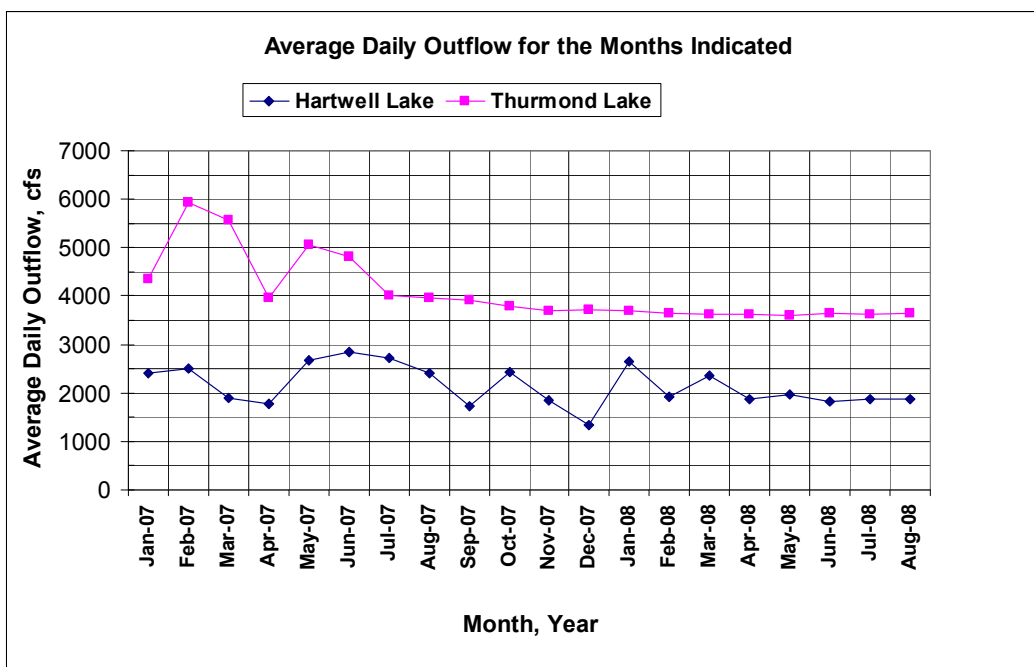
<http://water.sas.usace.army.mil/drought/dcp.cfm>

You can find a couple of excellent articles relating to the Drought Contingency Plan, one by the Corps of Engineers and one by our LHA president, Joe Brenner, in the winter 2007 LHA Newsletter. There are similar articles in other issues of our newsletter as well. I would encourage you to go back and read these articles. If you don't have a copy, you can find copies of all newsletters on the LHA website as follows:

<http://www.lakehartwellassociation.org/AboutLHA/Newsletters/tabid/60/Default.aspx>

**Flow Releases Since January 2007.**—During the past few months, there have been some erroneous reports about water releases from Hartwell Lake.

It has been implied or otherwise stated that 3,600 cubic feet per second (cfs) is being released every day from Hartwell Lake. This is incorrect. That amount of water is being released from Thurmond Lake, but much less water is released from Hartwell Lake. The drought plan requires that lake levels of the two lakes



be in balance. That is, if the level of Thurmond Lake drops 1 foot, then the level of Hartwell Lake should also drop 1 foot. This requires a considerably smaller release from Hartwell Lake than from Thurmond Lake. You can see from the graph that over the past year that even though 3,600 cfs has been released daily from Thurmond, only about 2,000 cfs has been released from Hartwell. In either case, this is still a lot of water. But this is what the drought plan requires as per state and federal regulations.

Some people have converted cubic feet per second to million gallons per day or billion gallons per day so they might have a better understanding of how much water it is. Try this. It may be a more easily understood conversion. An average daily flow of 3,600 cfs will cover 7,200 acres to a depth of 1 foot. An average daily flow of 2,000 cfs will cover 4,000 acres to a depth of 1 foot.

## Mother Nature Takes a Swipe!

*Submitted by Ruth Anne Maciag*

Hurricane Fay brought us some fearsome weather on Tuesday, August 26. We've seen and heard about the tornado that hit in the Clemson University area and other twister touchdowns in the Upstate.



*Tornado damage at Seminole Point near Fairplay.  
Photos by Nick Fisher*

There was however one particularly capricious tornado (I've heard it called a microburst) that was up close and personal for the Seminole Point neighborhood. It began by flattening two docks against the bank on the Georgia side of the Tugaloo at about T14. Then, as described by Jane Meriam who watched it from her dining room window, it motored across the water, whipping up three-foot waves, on the way to the south side of the Seminole Point Road ridge, where it rearranged the dock and gangway belonging to Lynn Petri. Then it went next door and drove several trees into the deck of the home owned by Art and Jennifer Fuller of Greenville.

It proceeded into the woods, tearing up trees, crossed Seminole Point Road, then came back to the water of Beaver Dam Creek where it moved the dock of Jane and John Carson about 200 feet, then it flipped it over on top of the tri-toon sitting in their lift. Jane bemoaned the new 220HP Honda motor which they had recently purchased which is nowhere to be seen because it's buried under the dock wreckage.

Next to the Carsons is the home of Rick Lique and Mary Turney. Rick said he's had to remove about 35 trees that were either snapped off or pulled up by the root ball by the force of this weather event.

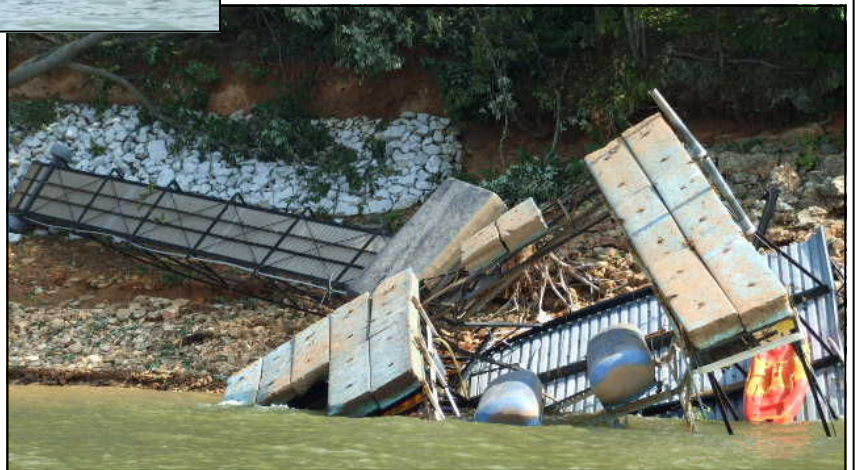
One very large red oak tree close to Rick and Mary's house fell on the screen porch roof, cracking the header, shattering glass and requiring reroofing of the lake side of the house. Rick's dock was untouched, but his pontoon boat which was on a lift and tied was lifted up and set down crossways so the pontoons were actually resting on the dock.

Grady and Sue Hopper, who live at the very end of Seminole Point Road, had three very large oaks come down, fortunately with no damage to their home. While cleaning up the debris,

they found that all three oaks were actually dead and/or hollow on the inside, most likely the result of the stress of several years of drought. Sue's comment was, "We now have a better view of the lake!"

After flipping Carson's dock and tearing up Rick's trees, the twister appears to have gone directly across Beaver Dam Creek and up the first cove where it flipped several docks, depositing them in front yards, tearing down dozens of trees, all on the west side of the cove. The property owners on that part of Dogwood Lane have taken a major hit; it looked like a real war zone. Cleanup will be going on for a long time.

Thanks to neighbors, friends and some local businesses, much of the mess on Seminole Point is cleared but there's still a long way to go. After all of this violence, we're grateful no one was hurt. As Mary Turney likes to quote her dad: "If it can be fixed by money, it's an inconvenience; if it can't, only then is it a problem."



**Safe Boating Course**  
**October 18, 2008**  
**World of Energy Visitor's Center**  
**9:00am to 4:00 pm Fee \$30**

Introduction to Boating, Boating Laws, Personal Safety Equipment, Safe Boat Handling, Navigation, Boating Problems, Trailing Boats, Waterskiing and Safety

For more information contact Ken Bruning (864-297-5397) or Jim Rudy (864-972-2085).

**Visit the LHA Website**

at [www.lakehartwellassociation.org](http://www.lakehartwellassociation.org).

### LHA Covekeeper Pilot Project Is Underway

Submitted by Larry Dyck

The Lake Hartwell Association has initiated a Covekeeper Program. The goals of the program are to (1) involve citizens in patrolling Lake Hartwell, (2) educate and involve lake residents in protection and lake stewardship efforts and (3) to create a network of active Lake Hartwell ambassadors.

trained volunteers will have a commitment of about ten hours per month patrolling, attending meetings and solving pollution problems.

It is really up to us, the people who enjoy the lake, to become the stewards of its quality. Would you like to join this group? The Covekeeper group meets the 3<sup>rd</sup> Tuesday of the month at 6:30 PM at the Anderson County Library. Please feel free to join us at our meetings. Contact us at [mail@lakehartwellassociation.org](mailto:mail@lakehartwellassociation.org)



*Covekeepers complete first field day.*



*Limnologist, Dr. John Hains*

About 20 LHA members are participating in a pilot Covekeeper project. The project has involved both field and classroom training. On field days the group has traveled on pontoon boats and observed “the good, the bad and the ugly” of the lake and its shoreline. Once a month classroom activities have included training sessions by SCDHEC’s Savannah Basin Watershed Manager on issues ranging from storm water runoff to oil spills and fish kills. Professor John Hains, a Clemson University limnologist, has provided sessions on southeastern lakes and some fundamentals training on lake dynamics. Upcoming sessions will include training on aquatic ecosystems, fecal coliform identification and evaluation, water pollution biology, algae and eutrophication, the Clean Water Act, Best Management Practices and the Lake Hartwell Shoreline Management Plan.

At the end of the training program, volunteers will have the scientific knowledge to identify pollution events and the political and legal wisdom to put their work into a larger context. Covekeeper volunteers will become the home-guard observers of lake conditions and the advocates for lake quality and stewardship in their neighborhood and in the larger Lake Hartwell and Savannah Basin communities. We anticipate that

**Consider Becoming a Volunteer Ambassador for Lake Stewardship**



## Potential Ethanol Gasoline Damage To Your Boat Engine

Submitted by Mike Massey

*Author's Note: The following article is being provided to alert boat owners of the concern regarding the use of ethanol blended gasoline when used in marine situations. Without proper care, damage to your boat's engine could occur.*

**THE PROBLEMS** - Ethanol (ethyl alcohol) is an alcohol made from corn or grains which is used to oxygenate gasoline fuel at the pumps. Gasoline blended with up to 10 % ethanol alcohol, called E10, is now in widespread use in the United States. Ethanol is made from corn, sugar and other grains. Many gas stations in our area today have E10.

Ethanol blended gasoline is a potential problem for boat engines. Boat engines exist in a water environment and ethanol loves to absorb water. Ethanol E10 gas can absorb large amounts of water into the boat fuel tank. Conventional gasoline did not have that tendency. Most marine manufacturer fuel recommendations now document that up to 10 % ethanol in gas is acceptable. Due to a number of reasons, there is still a risk of damage.

Ethanol gasoline is a potential problem for boat engines since they are very prone to phase separation when stored for several months. That means a water/ethanol mixture, being heavier than gas, will separate and sink to the bottom of the gas tank leaving a lower octane gas on top. When this happens several problems can occur:

The ethanol and water will get picked up by the motors fuel system. Even small amounts of water can harm the fuel system.

Ethanol is an excellent SOLVENT (dissolves plastic, rubber, fiberglass and more) and will dissolve resins that create a black sludge that coats and travels through the engine, causing engine stalling and other complications.

The low octane gas (lean fuel) on top can cause performance issues with 4-stroke engines and can cause damage to 2-stroke engines.

Several types of *older* engines can not use any fuel that contains alcohol. In addition, certain fiberglass tanks, mostly manufactured prior to 1992, will decompose from alcohol.

Note: Cars, unlike boats, are not as susceptible since their fuel is usually replaced every week or two. This usually prevents the possibility of water-contamination/phase separation.

**THE SOLUTIONS** - There are several precautions you can take to protect your boat motor (lawnmower, chainsaw, etc.) from the problems associated with ethanol.

1. Perhaps the most positive approach is to add a fuel conditioner to each tank of gas. Fuel conditioners stabilize fuel, inhibit corrosion and absorb moisture (water) without adding alcohol to the fuel.
2. If possible, try to avoid using ethanol fuel blends in your outboard and marine engines.

3. Avoid running on bottom of gas tank (where most water will sink).
4. Check fuel system for contaminants and clogging and replace your fuel filter often. Fuel filters should be replaced at least every 50 -100 hours.

There are several fuel conditioners on the market today which are suggested. Marine Formula STA-BIL and Evinrude - Johnson 2 + 4 Fuel Conditioner are two.

**If you wish to read more about the information included in this article please see the following web sites:**

[http://www.evinrude-parts.com/boat\\_ethanol\\_danger\\_precaution.html](http://www.evinrude-parts.com/boat_ethanol_danger_precaution.html)  
[http://www.goldeagle.com/sta-bil/stabil\\_marine.htm](http://www.goldeagle.com/sta-bil/stabil_marine.htm)

## Life Jacket Loaner Program

Submitted by Dan Ray

The Lake Hartwell Association has made a significant step towards improving the safety of boaters and swimmers by making available a quantity of life jackets (PFDs) for short term loan at several areas around the lake. This program started several years ago was updated and improved recently. Any person anticipating a boating or swimming adventure who does not have access to a correctly sized PFD can stop by a local marina and obtain one for a short term loan. Big Water, Hartwell, Clemson and Harbor Light Marinas are participating in this program. Since most drownings would be prevented by the use of a PFD, we hope that unnecessary loss of life on



*Brant Tew, owner of Hartwell Marina, receives PFDs for the Life Jacket Loaner Program from LHA's Safety Chairman, Dan Ray.*

the lake can be significantly reduced. LHA membership fees have made this service possible.

The Corps of Engineers is initiating a similar program for PFD loans to children at several Corps Recreation Areas. LHA and other groups were contacted by the Corps for contributions. LHA purchased PFDs in infant, child and youth sizes at very favorable prices from West Marine headquarters (arranged by Tanya Grant, Corps Ranger.) The PFDs from LHA will be available at Twin Lakes Recreation Area. Other areas will also be covered and will be announced by the Corps.

## Thank You

### LHA Community & Business Members!

We are grateful to the following businesses and organizations that support LHA "for the sake of the lake!" Their business contact information, including website links, can be found on the "Community & Business Partners" webpage at

[www.lakehartwellassociation.org](http://www.lakehartwellassociation.org).

Anchor All Realty & Mortgage - Tammy Mobley  
 Anderson Regional Joint Water System - Scott Willett  
 Big Water Marina - Jane W. Davis  
 Bill Brissey Real Estate - Bill Brissey  
 Captain Dave's Boating World - David Strickland  
 Cateechee Golf Club - Pamela Camp  
 Closet Tailors of Anderson - Robert Colcolough  
 Coldwell Banker Fort Realty - Fort Oglesby  
 Currahee Club - Chris W Whitley  
 Custom Steel & Wood - Don Haynie  
 DALCO Custom Homes - Flay Dalrymple  
 Dock Depot & Marine Supply - Richard & Georgeanne Henshaw  
 Docks South LLC - Bill Griggs  
 Dr. Andrew Adams DDS  
 Foxwood Hills POA -Bill Lewis Mgr  
 Good Buy Good Bye Fine Furniture Consignment – S. Savage  
 GREENSpace Surfaces LLC - Bill England  
 Harbor Light Marina - Larry Rich  
 Harding Waterfront Construction - Pete Harding  
 Hartwell Lake Properties - Mike Gray  
 Hartwell Marina & Boat Sales - Brant Tew  
 Indian Creek Contracting - Lori Duke Jones  
 Ingrid Lee Realtors LLC - Ingrid Lee  
 Interiors by Penelope – Penny Holst  
 Kroeger Marine Construction Inc - Dave Kroeger  
 Lake Hartwell Sail & Power Squadron - Mary Orem  
 Lee's Marine LLC - Randy Lee  
 Leeward Landing Assn of Boat Dock Owners - Bobby Medlock  
 Mike Sanders Boat Storage - Michael W Sanders  
 Paradise Point Inc - William Roberts  
 Paul & Susan Meng  
 Phil Jewelers, Inc. - Phil Silverstein  
 Portman Marina - Dave Freeman  
 Robert & Connie Banks  
 Robert T. Foster & Rudy O'Neal III Public Accountants  
 SC Homes and Lake Realty by Victoria McCormick  
 State Farm Insurance - Terence Roberts  
 Superior Dock Systems - Horace McGee  
 Swaney's Point Association - Danny Shook  
 T & M Custom Docks - Donnie Thacker  
 T N Construction - Thad Strickland  
 The Hartwell Sun - Robert Rider  
 USACE Hartwell Project - Tanya Grant  
 View Point Lot Owners Assn.  
 Watermark Realty - Pat Rowland

### Encourage Others to Support LHA

Do you know of any other community/business entities that share LHA's commitment to maintaining the water quality, scenic

beauty, and recreational opportunities of Lake Hartwell?

Why not invite them to join LHA today? Membership application forms can be found on each newsletter, inside the LHA brochure, and at our website: [lakehartwellassociation.org](http://lakehartwellassociation.org). You may also email the prospective member's name to [membership@lakehartwellassociation.org](mailto:membership@lakehartwellassociation.org), or call us at 1-864-224-5253. We will be happy to follow-up on your leads!

## New LHA Members

### Welcome Aboard and Thank You!

LHA continues to grow! Please welcome the following LHA members who have joined since our last newsletter.

### New Family Members

John & Sharon Aleck, Christopher Barber, Jim & Maria Barker, Ken Brown, Bobbie Busha & John O'Neil, Dupre & Manella Calhoun, Mike Cannon, Ken F. Casey, Dr. Mark P. Cheek, Joe & Barbara Cochran, Libby Corbett, Bruce & Susan Creamer, Richard Crochetiere, Mark & Linda Dayhuff, Darren & Julie Dean, James & Sheila Dew, Rhea & Steve Dignam, John & Ashley Drake, Beth & Robert Farrens, James & Jane Fireovid, Adam & Annette Florence, Charles & Tedra Fraley, Richard & Eileen Frazer, William "Lee" Geiger, Charles & Pat Harrell, Sally & Barry Hodges, Daren Hoeffner, Patricia Howard, C. Dale & Leah Hunter, David & Melody Jackson, Cynthia Jamison, Kenley Jones, Kim & Mark Kasper, Steve & Kris Kester, Michael & Nancy Kitchens, Joe & Dottie Krachek, Jeff & Becky Loggins, Ormande Mahoney, Cindy Manderson, Bill & Sheila Martin, Sam & Cindy McCall, Robert & Jan Meeks, Matt Nasrallah, Jim & Stephanie Newman, Daniel & Carla Nickles, Paul O'brien, Jimmy & Joan Owens, Sammy & Mildred Padgett, Donnie Patterson, Mrs. Barbara K. Peterson, Ross Piper, Clarence Pointer, Bonnie Pratt, Tim & Gail Riley, Scoville & Iris Roberts, Dave & Candy Romeo, Bryan Satterfield, Auston Shaw, Bob & Donna Sheldon, Grant & Susan Simon, Ken & Debbie Smith, T. V. Smith, Ronnie Stepp, Ronald & Mary L. Taylor, John & Kimberly Tonjes, Ann Van Horn, Brian & Linda Watkins, Doug & Maren Werts, Terry E. Williams, Jeff & Sherry Willis

### New Community & Business Members

Anchor All Realty & Mortgage - Tammy Mobley  
 Cateechee Golf Club - Pamela Camp  
 Interiors by Penelope - Penny Holst

### Donations to LHA

We are especially grateful for special donations to support LHA's ongoing work. Please join us in thanking the following LHA members for their generosity:

Marshall Meadors, Paul & Susan Meng, Adam & Annette Florence, Christopher Barber, Darren & Julie Dean, Rhea & Steve Dignam, Lewis Harper, Kim & Mark Kasper, Billy & Frances McCullough, Joseph Strohecker, Michael & Sharon Thaler.

**Thank you all for supporting LHA's efforts "For the Sake of the Lake."**

LAKE HARTWELL ASSOCIATION, Inc.  
P. O. Box 312  
Fair Play, SC 29643

NONPROFIT ORG  
U.S. Postage  
**PAID**  
Greenville, SC  
Permit # 1371



Email address: [membership@lakehartwellassociation.org](mailto:membership@lakehartwellassociation.org)  
Web Site: <http://www.lakehartwellassociation.org>

LAKE HARTWELL ASSOCIATION MEMBERSHIP APPLICATION  
P.O. Box 312; Fairplay, SC 29643

*Fall  
2008*

Membership Information: Check  all that apply

New    Renewal    Address change   Amount Paid \_\_\_\_\_ Date \_\_\_\_\_

Family \$25    Community, Association or Business \$100  
 Gift Membership    Additional Donation \_\_\_\_\_

Name \_\_\_\_\_

Spouse's Name \_\_\_\_\_  
(Family Membership Application Only)

Mailing Address \_\_\_\_\_

City \_\_\_\_\_ State \_\_\_\_\_ ZIP \_\_\_\_\_

Phone (H) \_\_\_\_\_ (W) \_\_\_\_\_

E-Mail \_\_\_\_\_

Occupation(s): Yours \_\_\_\_\_ Spouse's \_\_\_\_\_  
(If retired, check here  and give former occupations above)

Lake Address & County \_\_\_\_\_  
(\*or Gift Recipient's address) \_\_\_\_\_  
\_\_\_\_\_

Give something back to the lake.  
Select a committee on which you  
would be willing to serve.

- Legislative
- Program
- Financial
- Lake Cleanup
- Safety
- Technical
- Membership
- Publications

Pay by Check: Make checks payable to **Lake Hartwell Association, Inc.** Send to address above.

⇒⇒⇒ Your membership fees and donations are fully tax deductible. ⇐⇐⇐