

Letter from the President, Herb Burnham

Longtime members of the Lake Hartwell Association (LHA) know that we have for years advocated for adaptive management of the water in the Savannah River Basin as a means of optimizing its use and avoiding drastic drops in lake levels. We understand the need to “balance the basin” and to maintain realistic minimum flows downstream of the lakes. However, the current means of determining flows, especially during periods of drought, are based on pre-defined levels that are determined by historical records, and what one may call “what if’s”. One example is the “Winter Rule Curve” that automatically drops lake levels each winter to allow for the “possibility” of spring flooding...even during periods of extended drought. Properly applied adaptive management is based on current conditions and near term projections. To quote *The Future of Water* by Steve Maxwell and Scott Yates: “The water managers who will look the silliest in the future are the ones who insist that the weather patterns of the past century are the best predictors of patterns over the next century. Flexibility and adaptability will be more important than ever.”

The application of adaptive management in the Savannah Basin

will require significant changes in the current regulations and procedures used by the Corps of Engineers. Changes that will literally require acts of congress at the federal level; and since the water belongs to the states of South Carolina and Georgia, the changes will require legislative action by both states. Several stakeholders, including LHA, have been working with US Congressman Jeff Duncan (R-SC) for several years to explore what must be done to make this happen. Newly elected US Congressman Doug Collins (R-GA) has now committed to work with Duncan in the formation of a caucus to address the issue at the federal level. At the same time SC State Representative Don Bowen (R-Anderson), and GA State Representative Alan Powell (R-Hart) have been actively working the issue at the states’ level. As a result, a Savannah River Basin Caucus of senators and representatives has been formed in each state capital.

Meanwhile, an LHA Memorandum under my signature was distributed on February 11, 2013, to more than 100 state and federal elected representatives and stakeholders in the Savannah River Basin. Its purpose was to reenergize the support for adaptive management and suggest a relatively simple implementation scenario. Response to the memo was better than expected and a follow up article was released by LHA and published by several news media. The memorandum and article are posted on the LHA website LakeHartwellAssociation.org.

In this issue

President’s Message	1
New Corps Commander	2
Savannah River Basin Joint Caucus	3
Sanctuary Pointe Meeting	4
Lake Flyover	5
Greenpond Landing	6
Hartwell Dam Tours	7
EPA Report on 12 Mile River	8
Welcome New Members	10
LHA Community & Business Partners	11

On April 16, 2013, Representatives Bowen and Powell hosted the first joint meeting of the new South Carolina and Georgia state caucuses at the SC state capital In Columbia. It was very well attended and welcomed with enthusiasm by the SC senate and house sessions as described later in this newsletter. I left the meeting with a strong feeling of new hope that the two states can and will work together to solve our water management issues, and that adaptive management is finally becoming accepted as the most probable solution.

I had the good fortune of sitting next to and exchanging thoughts with Dr. *Cont. on page 2*

Officers**Herb Burnham**, President**Vacant**, Vice President**Doug Young**, Treasurer**Jill Miller**, Secretary**Directors and
Committee Chairs****Vacant**, Legislative**Cathy Foster**, Technical**Dr. Larry Dyck**, CoveKeepers**Pat Goran**, At-Large**Don Haynie**, At-Large**Jim Lizza**, At-Large**Scott Willett**, At-Large**Vacant**, Publications**Ruth Anne Maciag**,
Programs/Publicity**Dan Ray**, Safety**Vacant**, Membership**Ray Fedele**, Newsletter Editor

Eugene Eidson during the Joint Caucus luncheon. He is the principle for development and implementation of the Intelligent River Project at Clemson University, and presented a brief update of the project's status. As a result, I am even more convinced that the two states and the Corps of Engineers will miss a huge opportunity should they fail to design and implement an adaptive management system for the Savannah Basin using the state-of-the-art sensors and real-time access capabilities the Intelligent River Project will offer.

From reading this letter I am certain you sensed my excitement in the progress we have seen over the past several months in getting our elected representatives of both states and the federal government focused on our water management concerns, and demonstrating progress toward solutions. But don't be swayed into thinking we can "relax and let them handle it". The real work is ahead for us to keep advocating for action.

It's going to take time, money and patience to keep us moving in a positive and productive direction. As you can see LHA is playing a significant role and needs to continue to do so. Our strength is in our membership and each of you is once again encouraged to keep recruiting new members...you are by far our best recruiters. In each newsletter we list those who have made donations in addition to their annual dues. Please know these donations are appreciated now more than ever as we will be encountering extra expenses in advocating for changes at the three capitals. Donations are always welcome and are tax deductible.

Vote on Board Nominee

The Lake Hartwell Association Board of Directors has asked Ray Fedele to join the Board of Directors.

Please vote via email:

mail@LakeHartwellAssociation.org

Ray Fedele has been a lake lot owner since 1973 and a full time resident since 2000. He is an avid boater and a 35 year member of the Lake Hartwell Sail and Power Squadron, where he is a certified safe boating instructor.

Prior to his retirement, Ray worked at Fluor Corp. in various communications and marketing positions and as Executive Vice President and President of Guthrie Marketing Agency in Greenville. In addition, he has served in the SC Army National Guard as a communications officer for 20 years.

Ray is married to Kathryn who has been active in the Anderson area volunteer community for the past 10 years.

New Commander of Corps Savannah District

Lt. Col. Tom Tickner will succeed Col. Jeffrey Hall as commander of the U.S. Army Corps of Engineers' Savannah District when Hall retires in July after 29 years of military service.

Tickner has served in the same capacity for the corps' Philadelphia District, which includes the Delaware River Basin, Intracoastal Waterway and coasts in the states of New Jersey, New York, Maryland, Delaware and Pennsylvania.

Tickner was commissioned a second lieutenant in 1989. He later served in Operation Iraqi Freedom, as a platoon leader and task force engineer in the 101st Airborne Division at Fort Campbell, KY and has been deployed

throughout the Pacific Rim on various assignments.

The 1990 graduate of Penn State University went on to receive a master's degree in civil engineering from the University of Colorado. He is also a graduate of the U.S. Army Command and General Staff College and is an Airborne Ranger.

Tickner is a native of Wayne, PA, and his wife, Sheri, have two sons and two daughters.

Tickner is already working with Col Hall to ensure a smooth transition of leadership throughout the basin.

FIRST SAVANNAH RIVER BASIN JOINT-STATE CAUCUS Held at SC State House



Joint caucus attendees at the SC Capital

South Carolina State Representative Don Bowen of Anderson County and Georgia State Representative Alan Powell of Hart County organized a joint-state caucus meeting held at the South Carolina Capital in Columbia on April 16, 2013. Representative Bowen planned and hosted the very successful meeting aimed at beginning to establish a foundation of common issues regarding the future management of water in the Savannah Basin to be shared and pursued by the two states. These two representatives have long been leaders in water issues, and began organizing the two caucuses' months ago. Recognizing that any significant improvements in water management will require congressional action at the federal level; and for that to happen both states must also be in agreement, these state caucuses will act as steering committees to ensure that happens at the state levels in a timely and coordinated manner.

The Lake Hartwell Association (LHA) was invited to participate and was represented by president Herb Burnham. Friends of the Savannah River Basin, LHA's counterpart on Lake Thurmond, was represented by Barb and Harry Shelley; and the Corps of Engineers represented by Andy Ashley and Russ Wicke. Dr. Eugene Eidson of Clemson University, the director of the Intelligent River project, was a keynote speaker. South Carolina's Director of the Department of Natural Resources (DNR) Alvin Taylor also spoke in support of the caucuses' objectives. Senior staff members for US Congressmen Jeff Duncan (R-SC) and Doug Collins (R-GA) were present to demonstrate support at the federal level where the two congressmen are also forming a caucus that will work with the state caucuses.

A listing of state representatives and others of both states who attended this

joint caucus will be posted on our website LakeHartwellAssociation.org. If your representative is on the list please contact him/her to let them know how much you appreciate their support of this important issue. If they are not listed, tell them how important it is that they become active in your state's Savannah River Basin caucus.

The joint caucus attendees were introduced to and welcomed by the SC State Republican Caucus, the SC State Democrat Caucus, the SC House of Representatives while in session, the SC Senate while in session, and Governor Haley's office represented by Ted Pitts, the Governor's Deputy Chief of Staff. The House presented the GA Caucus a resolution of welcome and statement of common objectives, the text of same is also posted on the LHA website.

Contributed by Herb Burnham



Herb Burnham thanks Rep. Don Bowen of Anderson County, SC and Alan Powell of Hart County, GA for their leadership

SCPRT & SANCTUARY POINTE RESORT HOLD FIRST PUBLIC MEETING

On March 26th the SC Parks and Recreation Department and Sanctuary Pointe developers presented their conceptual master plan for the 325 acre resort to a packed meeting room in Seneca, SC. In fact, there was so much interest people were turned away by the Fire Marshall due to overcrowding. Most attendees were pleased with the overall master plan concept, however there were some that were concerned with the eventual environmental impact of the project on the lake. A few weeks earlier the Lake Hartwell Association Board of Directors, Technical Committee, and CoveKeepers Team were presented the master plan concept by the developers. This preview allowed the association to ask questions and keep our members abreast of the size and scope of the proposed project prior to the public meeting.

As is the case with large projects like this, decisions will need to be made by the developers on who they will partner with for the hotels, golf course and other amenities. Speculation is that all the major brands like Marriott, Hilton, Hyatt and all their sub brands are being contacted. The process of selecting and negotiating the contract with the hotel will take at least 12 months, so it will be 2014 at the earliest before construction would start. Sanctuary Pointe developers have stated that they will be hiring the best engineers to ensure that both the peninsula and the lake are not only protected, but maintained through erosion control. Also, all development elements will make use of LEED (Leadership in Energy and Environmental Design) guidelines and green building techniques. At this point, specific design details have not been presented for

the association to review. However, most projects of this nature (especially public/private partnerships) and magnitude often take much longer at every phase to complete, so the lack of detailed design information should be no surprise at this point. And without specific design details it's nearly impossible to define what specific steps will be taken and methods used to protect the environment during construction, operations and ongoing maintenance. We feel, the developers are well aware of the importance of "doing it right", not only to satisfy those of us who advocate "for the sake of the lake", but to ensure they satisfy local, state and federal environmental requirements.

In the associations' numerous contacts with the developers we have experienced an open and cooperative attitude, and a willingness to listen and share concerns and ideas. Assuming this continues we should expect the project to be an economic engine for the area during construction, and an economic magnet for the future.



ANOTHER PERSPECTIVE

By Herb Burnham

Even though we may be very familiar with something it often helps to see it from a different perspective or point of view. This is certainly the case with our beautiful Lake Hartwell. We talk a lot about its nearly 1000 miles of shoreline, its value as a recreational and economic development draw, and so forth. Seeing it from several thousand feet above the surface, however, gives one a whole new appreciation for its size and its importance to this region.

Lake Hartwell Association member Greg Shore offered to take Congressman Jeff Duncan (R-SC) on a flyover of the lake in his helicopter. As most of you know from previous newsletter articles and emails, Representative Duncan has taken on the challenge of forming a water caucus in our nation's capital to address the issues associated with optimizing the management of water in the Savannah River Basin.

The flyover lasted more than an hour and covered most of the lake. Highlights included a close up view of new and expanding industrial sites and the new water service recently constructed by the Anderson Joint Water System to serve several of them, the numerous lake front

communities, Clemson University and its 17,000 acre experimental forest and new marina facilities, the new Sanctuary Pointe project site, and of course the dam. Upon landing, all agreed they gained a whole new perspective and appreciation of the lake's importance and economic value to this region.

The Lake Hartwell Association thanks Greg Shore for his more than generous offer making this flyover possible.



Rick Adkins, Herb Burnham, Congressman Duncan and Greg Shore (Owner and Pilot of the helicopter)



Congressman Jeff Duncan viewing Lake Hartwell by air



Rick Adkins, Duncan's Anderson Office Manager

ANDERSON COUNTY'S NEW GREEN POND LANDING EVENT CENTER

Anderson County is developing a \$4.4 million dollar ADA accessible deep water boat ramp facility with docks, boat/trailer parking areas and 500 seat amphitheater for fishing tournaments and events. Phase One of the project is beginning in the next few months and will cost \$2.6 million. This facility is being developed at the existing Green Pond landing located off of SC highway 187 in Anderson County. This major county development will enhance the areas chances for competition fishing tournaments as well as fuel area tourism.

Contributed By Ray Fedele



SPRING BOATING TIPS: PROPELLER SAFETY

Test your knowledge

1. If a passenger falls overboard, you should...
 - A. Slowly reverse, keeping the person in sight at all times. Stop within five feet and allow the person to swim to the side of the boat.
 - B. Stop the boat. Allow the passenger to swim to the side and slowly pull the passenger to safety
 - C. Stop, slowly turn the boat around and approach while keeping the passenger in sight. Shut off the engine before bringing the passenger to safety
2. True or false?

It is safe for passengers to board or exit from the water if the engine(s) are idling.
3. Fill in the blank:

_____ will stop a propeller should the driver of a boat be thrown overboard or pulled away from the boat's controls.

Answers

1. **C** Never reverse your boat to pick up a passenger. Always stop, turn around and shut off the engine before pulling someone to safety.
2. **False** It's never safe to board while the engine(s)

are idling because the propeller may continue to spin even when the boat is in neutral.

3. **An engine cutoff switch.** A traditional lanyard or wireless kill switch connected to the driver and the boat's control panel or dash can save the driver's life if he or she is thrown from the boat.

You can do several things to minimize the risk of propeller injury:

- Personally examine the area around your boat's propeller before starting the engine.
- Take a moment to inform your passengers of the location and dangers of the propellers before setting out. Call attention to the propeller warning labels around your boat.
- Never permit passengers to ride on the bow, gunwale, transom, seat backs or other locations where they might fall over board and under the boat.
- Establish and firmly communicate rules for the use of swim platforms, boarding ladders and seating.
- Consider using an engine cut-off switch or another propeller safety device, and make sure all passengers (including you) wear a life jacket at all times.

Source: United States Coast Guard



200 Feet Below Hartwell Lake Water Level? No Problem!

Dam Tours

Ruth Anne Macaig

The Hartwell Dam is truly an engineering marvel. And the Lake Hartwell Association, coordinating with the Corps of Engineers, has offered tours of the dam for several Fridays in the last two months. Many of our members have taken advantage of this opportunity and have agreed its well worth their time.

The tour begins in the control room, which houses banks of switches, dials, and readouts. Included in the tour is a visit to most of the many levels below the control room. The lowest level is 200 feet below the lake's full pool of 660 and is at a constant 50 degrees. Here you see the penstocks, pipes large enough to fit a school bus and a car on either side, which regulate the water intake to the turbines which



generate the power.

The tour concludes with a long elevator ride, plus two flights of stairs, to the top of the dam. And from the top there is a stunning view of the lake on

the head gates.

There's much more to view on intervening levels, and a wealth of information available from the Corps personnel who conduct the tours: George Bramlette, Manager of the Hartwell Project, James Payne, Manager of the Power Plant, Sandra Campbell, Supervisory Park Manager.

At this time we are unable to offer future dates for dam tours because of Corps personnel time constraints. However, we hope there will be dates available in the near future, and we will notify you when we have that information.

FOR THE SAKE OF THE LAKE

Photos by Holly McPheeters



one side and the power units and gates on the other. From here also is a view of the mechanism that can open and close

THE BEST DAM RUN!!!!

The 35th Annual Lake Hartwell Dam Run will take place Saturday, May 4th: – 5K, 10K, 1 mile fun run. All races end at Big Oaks recreation area. This event is hosted by the Hart County Chamber of Commerce and the Hart County Running Club.

Join the fun for a scenic run! Awards, food, T-shirts. 5K and 10K USATF certified. For further information or to register go to www.active.com.

A WORD TO THE WISE...AND TO THOSE WHO CARE! FROM LAKE HARTWELL ASSOCIATION by Ruth Anne Macaig

Just a reminder that the Corps Hartwell Lake Clean-up Campaign will begin in mid-August and run to September 28th. And on Saturday, September 28th, the Lake Hartwell Association, with the Corps, will thank all volunteers who participated in the clean-up with a picnic at Big Oaks Recreation Area.

So now is the time to get your team ready – your neighborhood, your extended family, your Boy Scout Troop, your church group, or you and a couple of buddies, whoever is willing and able, to help rid the Lake Hartwell shoreline of UNSIGHTLY STUFF.

Any questions? Contact Nancy Sumners, Natural Resource Specialist, Hartwell Dam and Lake, 706-856-0329.

GOOD NEWS & DISTURBING NEWS

By Dr. Larry Dyck

In 2012 EPA undertook a Supplemental Remedial Investigation of toxic PCBs left in the Twelve Mile River and its floodplains following the removal of the two Woodside dams. The region investigated is about 5 miles upstream of the Twelve Mile River Arm of Lake Hartwell and traverses a length of about 1.5 miles.

The Remedial Investigation set out to evaluate two types of risk: (1) risk to humans (health-risk) and (2) risk to wildlife (eco-risk). The human population selected for evaluation consisted of individuals who would use the river. The population included a group of adults and children who might access the river for paddling, picnicking, wading or sunbathing. Hundreds of sediment samples were collected from the river channel and the floodplains to determine sediment PCB concentrations. Evaluations showed that the risk to the recreational population is very low! **In fact the risk is 10 to 100 times lower than the minimum threshold established by EPA for human-health-risk.** This is GREAT NEWS! It means the river is safe for paddling, wading and sunbathing; recreationists should not be concerned with risks to their own health or that of their children.



Map of EPA Remedial Investigation Site located in the Twelve Mile River Gorge. The project's run is about 1.5 miles.

As an aside, the reason risk to human health is not an issue is because PCBs need to be ingested from sediment to create the health-risk. So, even the most curious child would not be able to eat enough contaminated sediment (mud) to create a health issue. The only way human health is placed at risk by PCBs is by eating contaminated fish! So, while you are advised not to eat any of the fish from the Twelve Mile River Arm of the lake, if you eat fish from other regions of the lake, take a moment to learn how to clean them, so as to reduce your health risk (see: <http://www.scdhec.gov/administration/library/ML-004042.pdf>).

WHAT ABOUT ECO-RISK?

First off, EPA is to be commended for investigating eco-risk for both the well established aquatic food chain (contaminated fish consumed by fish-eating wildlife) and for the newly created terrestrial food chain, formed after dam removal left contaminated floodplains rising tens of feet above the river. In the entire history of PCB-contamination of the Twelve Mile River/Lake Hartwell, EPA had NEVER before undertaken an eco-risk evaluation of wildlife other than that associated with fish. In other words, we know quite a lot about contamination in bass, catfish and shad, but we know nothing about the impact on animals

that consume these fish. Unfortunately EPA's eco-risk studies are suspect and subject to criticism (see below).

Since eco-risk evaluations are very expensive and time consuming, EPA agreed to do a "Modeling" study for the Twelve Mile/Lake Hartwell. In a "Modeling" study appropriate wildlife are chosen for evaluation. In this case mink, a mammal, and the belted kingfisher, a fish eating bird were chosen for the aquatic foodchain. The short-tail shrew, a mouse like animal that eats earthworms, and the redtail hawk, a bird that eats shrews, were selected for the terrestrial foodchain.

The Model evaluates if sufficient toxic material (PCB) is available in local fish-tissue and sediment to cause the test-organisms to reach a threshold of adversity. The threshold level, called the LOAEL for "Lowest Observed Adverse Effect Level." The LOAEL is a value that was generated in studies at other EPA Superfund sites and is "borrowed" for use here. Obviously

the magnitude of the LOAEL selected is very important. A low value means the test organism is very sensitive to PCBs, a high LOAEL means the test organism is less sensitive and possibly resistant to PCBs.

So what did EPA do? EPA chose to use two sets of very generalized LOAEL values. One set of values was for "generic" mammals and was applied to the mink and the short-tailed shrew, in this study. The second value was for "generic" birds and was applied to belted kingfisher and redtail hawk. Now, in the absence of other information "generic" LOAEL values make sense. BUT, mink are not in that category. A great deal of work has been invested to learn how mink respond to PCBs and they turn out to be very sensitive. However, the LOAEL value EPA used for mink in the Lake Hartwell study is TEN TIMES higher (less sensitive) than those reported by EPA at other sites (Kalamazoo River, Hudson River and Great Lakes). Using the high LOAEL value, EPA

determined that mink modeled to conditions in Lake Hartwell were "safe." Only 1 of 27 fish samples exceeded the LOAEL in their evaluation. By comparison, if the more sensitive LOAEL value from Kalamazoo/Hudson/Great Lakes had been

used, then 15 of 27 fish samples exceed the LOAEL threshold! When well over half of the samples from are not protective of mink, **a problem has been identified in the Twelve Mile/Lake Hartwell system.**

After all four animals were modeled with the "generic" LOAEL values, EPA wrote: "...10% {of samples} (9 of 90) were greater than the LOAEL (outside of protective range)." However, EPA's results are called into question for mink alone...55% of samples exceed the Kalamazoo/Hudson/Great Lakes LOAEL. In addition using the generic LOAEL values 17% of the short-tailed shrew samples and 22% of red-tail hawk exceed the threshold effect!

Finally, a question arises as to why the belted kingfisher is the bird chosen to evaluate the aquatic food-web. The kingfisher is a relatively small bird that consumes small fish with relatively low PCB concentrations. By comparison, larger birds that are top carnivores like the Osprey and Bald Eagle consume larger fish with higher concentrations of PCBs in their tissue. LOAEL values exist for the Bald Eagle and EPA should incorporate these data into the study.

One fact is clear to this writer: the Eco-Risk component of the Supplemental Remedial Investigation is not complete as written. That view has been communicated to EPA and they are reviewing the comments. It is time to learn what the environmental risks are to wildlife in the Twelve Mile/Lake Hartwell system.



Kayaker traversing the Twelve Mile River Gorge (see details at: www.americanwhitewater.org/content/River/detail/id/1709).

Welcome Aboard, New Members!

Please welcome the following members, who have joined LHA since our last newsletter.

New Family Memberships

- Ray C. Ballew, Jr.
- Debra & Bill Boyd
- C. Davis Broadway
- Steven Chumley
- Raymond & JoAnne Corontzes
- Zachary & Beth Corontzes
- Alan Creel
- William & Cindy Davis
- Lee & Kelley Dunlap
- Alan Gaskell
- Robert & Susan Godfrey
- Harold & Edith Hoke
- Edward & Jane Houston
- Ray & Karen Johnson
- Mike Larkin
- Vicki McWhorter
- Richard and Linda Murray
- John & Connie Norton
- Chuck & Brenda Norton
- Karen Payne Payne
- Tim Plunkett
- Sandra Randican
- Andrew & Julia Schival
- Michael Strauss
- Marilyn J. Waits
- C. Allen Wright
- Linda Wrightson

New Community & Business Memberships

- Chapman Design Group, Inc.
Don Chapman
- Gold's Gym Anderson SC
Brad Smith
- Teakwood Plantation HOA
Bob Brohm

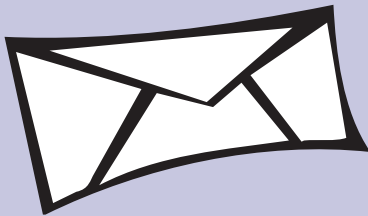
Special Donations

We wish to recognize our members who have made special donations to support LHA's work "For the Sake of the Lake."

- Ms. Sheryl Cantwell
- Dale & Pamela Carlson
Jack & Helen M. Eldredge
- Evelyn & Joseph Francis, Jr.
- Vivian V. Hunter
- Robert & Patricia W. Jordan
- Heinz Koch
- Keith Kozicki
- Jim & Audrey Neutzling
- Betty Marie Stewart
- Michael Strauss

GOT EMAIL??

Please remember to update your email address to make sure you're getting the latest LHA news, meeting notices and action alerts!



Not sure we have your current email address?
Send an email to
membership@lakehartwellassociation.org

LHA respects the privacy of its members and does not share contact information, including email addresses, with anyone.

LHA Mission Statement

WE will develop and establish the Lake Hartwell Association as an organization that promotes and encourages cooperation, assistance and information exchange among those concerned with Hartwell Lake and the Savannah River Basin.

WE will collect and distribute information on matters affecting Hartwell Lake.

WE will provide a forum to collectively represent our membership on issues that pertain to the development, preservation and comprehensive management of Hartwell Lake.

WE will maintain liaisons and communications between Lake Hartwell Association and educational, governmental, scientific and other communities.

THANKS FOR YOUR SUPPORT!

We are especially thankful for the Community and Business members that generously support LHA!

Their contact information and website links are available on the LHA website!

Ada Lee Birnie

Aesthetic & Restorative Dentistry

James M. Groeber, DDS PA
(864) 224-7812

American Services, Inc. of Greenville, SC

Henry Harrison (864) 292-7450

Anderson Area Chamber of Commerce

Lee Luff (864) 226-3454

Anderson County Sheriff's Office Sheriff

John Skipper (864) 260-4400

Anderson Regional Joint Water System

Scott Willett (864) 231-5987

Andrew Adams, DDS

(864) 226-6278

Big Water Marina

Jane Davis (864) 226-3339

Bill Brissey Real Estate

Bill Brissey (864) 226-7380

Brysan Utility Contractors, Inc.

Christopher Barber (770) 985-4606

BuyLakeHartwell.com, LLC

Don Cleveland (864) 940-5444

Byers Precision Fabricators

Roger Byers (828) 693-4088

C. Dan Joyner Company

C. Dan Joyner (864) 242-6650

Carola Dauchert Real Estate LLC

Carola Dauchert (864) 226-5473

Carolina WaterSports

Chad Hodges (864) 332-0090

Chapman Design Group, Inc. (NEW)

Don Chapman, AIA, CMB (864) 224-7563

Chickasaw Point Property

Doug Young (864) 972-3680

Clearwater Shores Community

Gary Bruce (864) 304-3656

Coldwell Banker Fort Realty

Fort Oglesby (888) 409-5054

Collins Dock, Inc.

Tammy Collins Smith (864) 225-2881

Connie & Robert Banks

Currahee Club

Andrew Ward (706) 827-1700

Custom Dock Systems

Don Haynie (864) 225-2393

Dispute Resolution & Mediation Services

Herb Burnham (864-287-1568)

Docks South, LLC

Bill Griggs (770) 377-3625

Eric Nilsson

Floatair Boatlifts, Greenville, SC

R. J. Foster (864) 467-1806

Foxwood Hills Property

Owners Association

Sandra Jones (864) 647-9510

Gold's Gym Anderson SC (NEW)

Brad Smith (864) 225-4653

Grady's Great Outdoors

John Phillips (864) 226-5283

Greg & Barb Collins

Hart County Chamber of Commerce

Kiera Partlow (706) 376-8590

Hartwell Lake News

Angie Wilson (864) 934-3952

Hartwell Marina & Boat Sales

Brant Tew (706) 376-5441

IPC Supply, Inc.

Lynn McLay (864) 226-1588

J&S Shoreline

Angie Johnson (706) 377-4891

JC Sports

Jeff Crouch (864) 882-4212

Jerilyn Wiech, Keller-Williams

Lanier Partners (706) 244-8211

Kroeger Marine Construction, Inc

Dave Kroeger (864) 882-7671

Lake Hartwell Sail & Power Squadron

Bert Baxter (864) 601-1660

Lakeside Chiropractic, LLC

Dr. Cindy Pradhan, DC (864) 224-7660

Lee's Marine

Randy Lee (864) 224-3338

Marine Specialties, Inc.

Thomas M. Child (864) 260-9700

Matthew Nasrallah, Attorney-at-Law

(877) 266-3694

McCullough Properties

W. E. McCullough (864) 882-4682

Mike & Sherry Hayes

Mike Sanders Boat Storage

Michael W Sanders (864) 231-0010

Motivational Sports Products

Terry Swain (864) 972-0690

New Harbor Light Marina

Larry Rich (706) 356-4119

Old Stone Tractor Company

Ben Griffen (864) 225-4639

Palmetto Lakeside Services

Lee Thompson (864) 933-0707

Palmetto State Transportation Co. Inc.

Bob Dumit (800) 269-0175

Paradise Point Inc

William Roberts (404) 261-5003

Paul & Susan Meng

Phil Jewelers

Phil Silverstein (864) 226-7635

Pintail Point Property Owners Assn.

Sheree Moats (864) 622-2265

PIP Printing

Theresa O'Rourke (864) 225-1471

Portman Marina

Dave Freeman (864) 287-3211

Sanctuary Pointe

Robert Daffin (404) 384-6229

Southern Industrial Hygiene & Safety,

LLC – Margaret Philbin (770) 375-1327

State Farm Insurance

Terence Roberts (864) 231-9312

Strickland Marine Center

Dave Strickland (864) 225-0145

Swaney's Point Association

Danny Shook (828) 242-1612

T N Construction

Thad Strickland (864) 574-2113

Teakwood Plantation HOA (NEW)

Bob Brohm (864) 287-2534

Teal Communications, Inc.

David Teal (770) 935-1177

Teva Skin Science, LLC

Deb Oxley (828) 545-0842

The Hartwell Sun

Robert Rider (706) 376-8025

Tom Miller, Keller-Williams

Lanier Partners (678) 469-9917

Tugaloo Property Owners,

Lavonia, GA - R. Grimm

Upstate Forever

Brad Wyche (864) 250-0500

USA Corps of Engineers

Tanya Grant (888) 893-0678

View Point Lot Owners Association

Water Education & Environmental Center

Charlie Gibson (864-646-7729)

Watermark Realty

Pat Rowland (706) 356-2121

William Callahan, DDS

(864) 647-9000



Lake Hartwell Association, Inc.
 P.O. Box 2122
 Anderson, SC 29622

NON-PROFIT
 ORGANIZATION
 US POSTAGE
PAID
 PERMIT NO. 539
 ANDERSON, SC



Email us at membership@lakehartwellassociation.org
 Or find us online at www.lakehartwellassociation.org

Printed using 99.9% recycled paper and biodegradable inks.



Lake Hartwell Association

P.O. Box 2122 | Anderson, SC 29622

Spring 2013

Membership Application

You may mail this Membership Application form with your check to LHA at the above address,
 or visit the LHA website (see above) to make a secure credit card payment!

Membership Information: Check all that apply



New Renewal Address Change Amount Paid \$ _____ Date _____

Family \$35 Community, Association or Business \$100

Gift Membership Additional Donation \$ _____

Name _____

Spouse's Name *(If Family Membership)* _____

Mailing Address _____

City _____ State _____ Zip _____

Phone(H) _____ (W) _____

Cell _____ Email _____

Occupation(s): Yours _____ Spouse's _____

(If retired, check here and give former occupations above)

Lake Address _____ County _____

(*of Gift Recipient's Address) _____

Pay by Check: Make checks payable to Lake Hartwell Association, Inc.

Send to address above

Give Something Back to the Lake

Please select committees on which you would be willing to serve

- Legislative
- Program
- Financial
- Lake Cleanup
- Safety
- Technical
- Membership
- Publications
- Covekeepers
- Other