



# Lake Hartwell Association, Inc

Winter, 2009

Volume XXI, Number 1

## Letter from the President

Submitted by Joe Brenner

## Inside this issue



Lake Hartwell reached a record low level in October, and there's no relief in sight. If the current drought continues, the entire conservation pool (625 MSL) will be consumed by the end of 2009. The effects of climate change are upon us. Though no one is sure how overall average rainfall will be affected in the southeastern U.S., all the climatologists I've heard from have projected greater weather extremes, i.e. longer and more severe droughts.

The existing Corps Drought Contingency Plan clearly cannot handle the weather patterns that we are experiencing. It is based on historical events and decades old operational approaches. There must be a greater understanding by all stakeholders within the Savannah River Basin that the reserves in the lakes must be maintained in order to protect the entire basin through severe drought situations. It must also be recognized that an appropriate drought plan will promote a "share the pain" approach throughout the basin. It is absurd to be holding boat races on the river in Augusta while our businesses suffer, our boat ramps are closed, the lake is not navigable and our docks sit on dirt.

LHA lobbied for a reduced winter flow rate in late 2007. Such a plan was developed by Georgia EPD and proposed in July 2008 for implementation October 1. Due to late development of the plan, and slow buy-in by the stakeholders, flow reduction has been delayed by almost two months. There is talk of re-establishing flows after January 2009 rather than February as originally proposed. This is clearly a "too little, too late" scenario. The water belongs to the states (people) of Georgia and South Carolina, and the states should be taking aggressive action to protect our lakes. Thus far, they have not.

Georgia provided an extensive study when it proposed the winter flow reduction. It basically concluded that reducing flow from October 1 through February 28 would save the lake from

### LHA Mission Statement

**We** will develop and establish the Lake Hartwell Association as an organization that promotes and encourages cooperation, assistance and information exchange among those concerned with Hartwell Lake and the Savannah River Basin.

**We** will provide a forum to collectively represent our membership on issues that pertain to the development, preservation and comprehensive management of Hartwell Lake.

**We** will collect and distribute information on matters affecting Hartwell Lake.

**We** will maintain liaisons and communications between the Lake Hartwell Association and educational, governmental, scientific and other communities.

consuming the entire conservation pool until 2011. In fact if rates were left at 3100 cfs, the lake level would actually recover during the drought. The plan also included extensive monitoring to ensure no negative impacts downstream. Now, instead, the reduced flow plan has been cut from 5 to 2 months!

LHA believes that we should continue the lower 3100 cfs flow rate indefinitely. The monitoring plan is in place to protect the lower basin, and it makes no sense to simply raise flows on some predetermined date regardless of the basin condition. The lake stakeholders have already shouldered the brunt of the drought impacts and should not be expected to suffer further hardships due to ineffective and poorly executed drought mitigation attempts. We will be contacting LHA members for their help in getting our elected officials to step up and support our water resources.

This will be my last cover letter as LHA president though I will certainly continue to do whatever I can on behalf of our members. The last three years have been challenging, and I've certainly appreciated your enthusiasm and support. I now leave the task in the capable hands of Herb Burnham. Please give him and LHA your strong support and commitment as we can fully expect future challenges to be ever greater.

LHA's Annual Fall Meeting Drew Much Attention	2
LHA Represented at Historical Water Conference	3
Hartwell Lake Level Projections (or, When will the lake fill up again?)	4
Ask the Corps	6
2008 Hartwell Lake Clean Up Campaign a Success	7
Let's Get Ready for Boating Next Year	8
Proposed Nuclear Power Plant Expansion On The Savannah River	9
Scouts Involved in Shoreline Management	9
LHA Supports Boat Ramp Extension	10
South Carolina Water Planning Legislation Update	10
LHA Website	10
Thank You LHA Community & Business Members!	11
LHA Membership: Welcome Aboard & Thank	11

Lake Hartwell Association, Inc.

P. O. Box 312  
Fair Play, SC  
29643

(864) 224-LAKE

**OFFICERS & DIRECTORS**

**Officers**

Joe Brenner,  
*President*

vacant,  
*Vice President*

Herb Burnham,  
*2nd VP,*

Mike Massey,  
*Past-President*

Jim Bushey,  
*Treasurer*

Pam Thacker,  
*Secretary*

**Directors & Committee Chairs**

Pat Goran,  
*Legislative*

Dr. Larry Dyck,  
*Technical*

Jim Gardner,  
*Publications*

Ruth Anne Maciag,  
*Program/  
Publicity*

Dan Ray, *Safety*

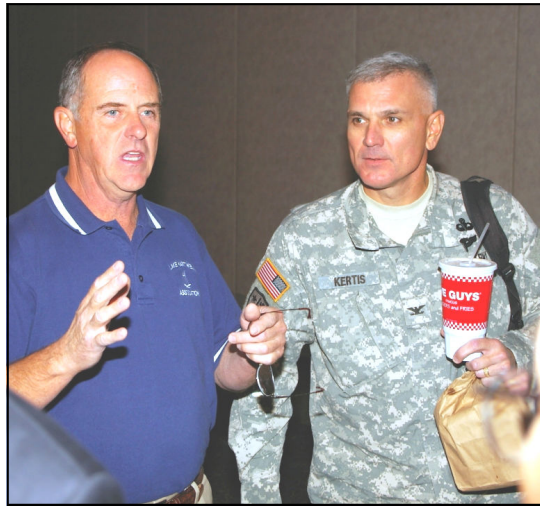
Vern Sauer,  
*Webmaster*

Mike Massey,  
*Membership*

**LHA's Annual Fall Meeting Drew Much Attention**

*Submitted by Ruth Anne Maciag*

Close to five hundred people were in attendance at the Lake Hartwell Association Annual Meeting on October 23, 2008. Everyone wanted to hear from Col. Kertis about Lake Hartwell water level, water release and future plans for lake water. Col. Edward J. Kertis, Jr. is District Commander, U.S. Army Corps of Engineers, Savannah District.



*Col. Edward J. Kertis, uneaten dinner in hand, listens as LHA President Joe Brenner discusses plans for LHA's annual informational meeting.*

Joe Brenner, president of LHA, opened the meeting with introductions including State Representative Don Bowen and representatives from the offices of State Senator Kevin Bryant and U.S. Senator Jim DeMint.

Mr. Brenner then gave a summary of LHA's drought perspectives. Climatologists forecast future droughts to become progressively more severe. It is evident in the current drought that the management plan, last updated in 2006, does not meet the needs of all Savannah Basin users. Flows must be reduced immediately to preserve basin water as long as possible. Adaptive management practices must be adopted in order to provide optimum flows and to meet the

minimum needs of all basin users.

Both Georgia and South Carolina have requested that the Corps reduce outflow from the Thurmond Dam from 3600 cfs to 3100 cfs per day during the winter months. The Corps agrees with this request and has begun the Environmental Assessment to accomplish that reduction. Law requires that the Corps provide a 30-day comment period before changing the flow. Hopefully this change can be implemented in November.

Mr. Mike Massey, LHA past president, reported on his efforts, along with Representative Don Bowen and Senator Kevin Bryant, to introduce a water bill in the South Carolina Legislature which would create a water council composed of representatives from SCDHEC, SCDNR and other agencies. The bill would provide the new water council with the

authority to develop a comprehensive water management plan. Mike reported that a water study was completed in 2004 by DNR, which identified many significant recommendations. Unfortunately, most of these recommendations have not been implemented since there is no clear planning process to do that in the state. Approval of the water bill would provide that process through the development of the comprehensive water plan. The bill was stalled in the legislature in 2008 due to prior water legislation that was being negotiated. Mike said the bill is being revised and will be re-introduced for the 2009 legislative session.



*Hartwell Project Manager, Virgil Hobbs, answers questions from the audience. Col. Kertis, Jeff Larson, SR Watershed Manager for GA EPD & Joe Brenner take turns answering members' concerns in their respective areas.*

Mr. Jeff Larson, Savannah River Watershed Manager for the Georgia EPD, also spoke at the meeting. He related that Georgia developed the framework and passed legislation for a Comprehensive



Joe Brenner and Mike Massey found a "receptive ear" in Jeff Larson (center) after his presentation.



When the floor was opened for questions LHA members and guests asked some tough questions. Concerns expressed included the low water level, using desalinization and nuclear power plants.

Statewide Water Plan. The state is beginning the process of establishing regional planning committees. There will be a committee for the upper Savannah Basin, and LHA has nominated representatives.

Col. Kertis was the final speaker. He agreed that the outflow from Thurmond Dam should be reduced. He explained that we don't know what impact this reduction might have on the industry, waste streams, wetlands, water intakes and other stakeholders downstream who all depend on a minimum flow out of Thurmond Dam. He also stated that what he hears from the folks in Augusta and Savannah is that Lake Hartwell has all the water and why aren't they sending more downstream.



Col. Kertis provided top-level information & answers to questions asked.

All of the speakers, as well as Virgil Hobbs, Operations Manager of the Hartwell Project, were available to answer questions at the conclusion of the presentations. And there were many questions.

## LHA Represented at Historical Water Conference

Submitted by Mike Massey

Clemson University sponsored the first South Carolina Water Resources Conference on October 14-15, 2008 in Charleston. The purpose of this significant, initial state water conference was to provide an open forum to discuss current water policies, research projects and water management in the state. About 500 people involved with all aspects of water in South Carolina were in attendance.



Conference attendees shown above had an opportunity to discuss state water issues during a break in the proceedings: Dr. Gene Eidson, Director - Clemson University, Center for Watershed Excellence; Mike McShane, Chairman - South Carolina Natural Resources Board; Mike Massey, Chairman - LHA Legislative Committee for South Carolina; Dr. Carol Couch, Director - Georgia Environmental Protection Division; Herb Burnham, LHA President-Elect; Joe Brenner, LHA President.

In order to maintain a current understanding of water issues, as well as the latest water technology and planning advancements, several LHA members were in attendance. In addition, Mike Massey, LHA Legislative Chairman for South Carolina, was asked to present the significant aspects of the new South Carolina Comprehensive Water Plan legislation he has helped to develop and been involved with. This session was very well attended with a great amount of interest demonstrated in South Carolina water planning.

A major benefit of attending such a conference is the chance to meet other water planners, managers and stakeholders and share ideas and plans for each area of interest. The LHA representatives took great advantage of the opportunity to do this and attended as many different presentations as possible and held many additional informal meetings between conference activities.

## Hartwell Lake Level Projections (or, When will the lake fill up again?)

Submitted by Vern Sauer

I was asked to write this article about Hartwell Lake levels and what to expect in the upcoming months. I've worked as a hydrologist with lakes, rivers, and creeks for more than 50 years, and I know that these things go through various kinds of climatic cycles. But I'm not a forecaster, so please keep this in mind as you read on.

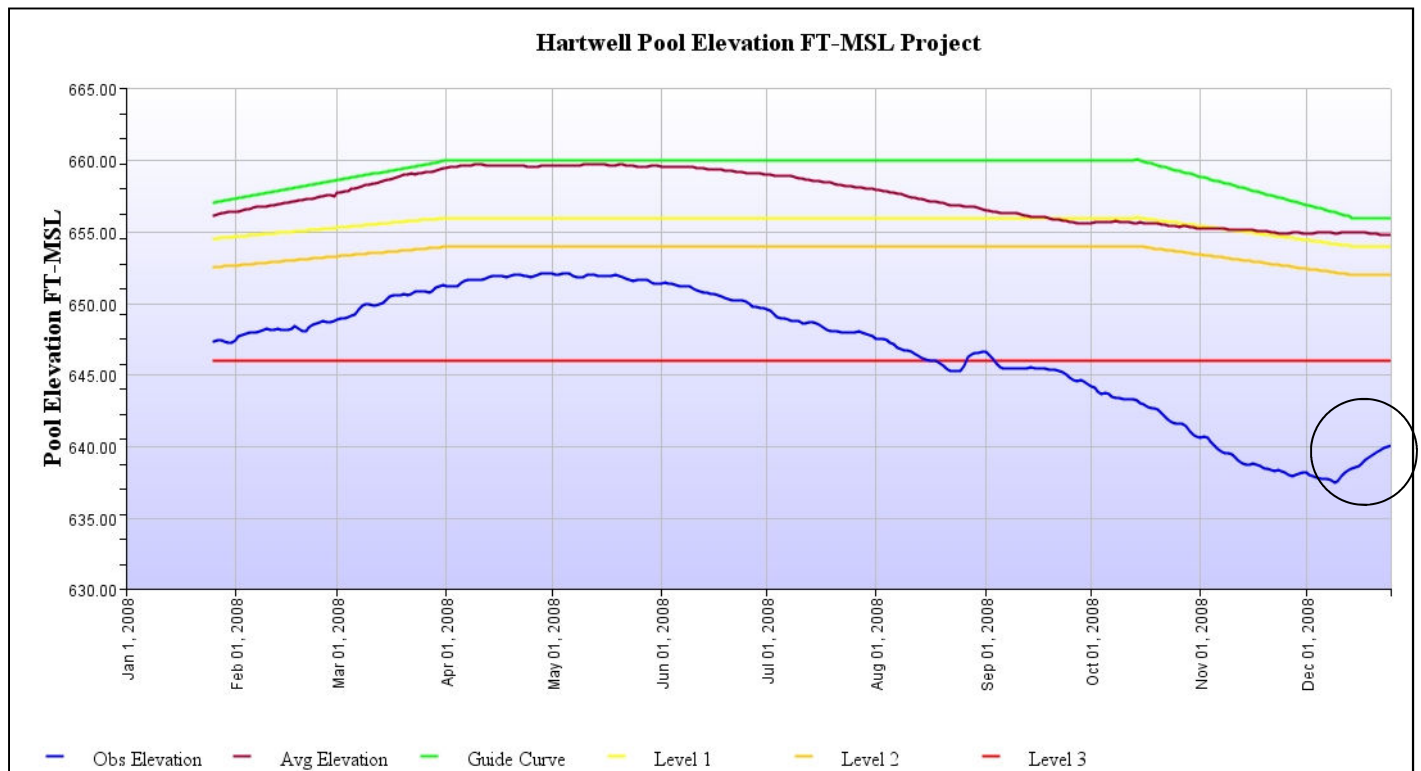
As I write this in the middle of December, Hartwell Lake is at the lowest level it has ever been since it originally filled and reached full pool for the first time in March 1962. That filling from completely empty to full pool took only 14 months. It amazed many people that it could fill so fast but was it really that phenomenal? Did it take a tremendous amount of rain to accomplish that filling? Yes and no. It did take considerable rain, but more importantly it took consistent rain in that for 14 months we had good rains almost every month. However, the total rain over that 14 month period was just over normal at some recording stations and just under normal at other stations. So you see it doesn't take huge amounts of rain to fill the lake, just consistent rain for a few months. But in addition to that, there was one other very big factor involved in 1961 and 1962. That is, there was no water released through the dam during that 14-month period.

Let's look at some of the other low water periods in the past history of the lake to see how long it took for the lake to recover and what the factors were that resulted in returning to full pool. The lowest level previous to our current level was at the end of

December 1981. The lake reached a level of 642.4 feet, just 2 feet above the current level. By the first of May in 1982, just 4 months later, the lake was full again. This filling can be attributed to consistent spring rains, slightly above normal, for the period January through April. At Clayton, near the center of the drainage basin on the Georgia side, actual rain was 27.6 inches compared to 26.2 inches normal rain. At the Clemson College rain gage, near the center of the basin on the South Carolina side, rainfall was 23.0 inches compared to normal rainfall of 19.6 inches for the 4-month period. The other important factor in 1982 was that releases through Hartwell dam were relatively low, averaging only 1,480 cfs (cubic feet per second) for the 4-month period.

The second lowest level of the lake was at the end of December 1988 when the lake reached a level of 645.4 feet, 14.6 ft below full. It was full by August 3, 1989, just 7 months later. Rainfall at Clayton during this 7 month period was 55.9 inches, 12 inches above normal for that period. At Clemson, rainfall for the same period was 42.8 inches, 10.6 inches above normal. Releases of water through the dam for the 7 month period averaged 2,010 cfs. One reason the lake took longer to recover in 1989 than it did in 1982 is that rainfall in the early spring months was somewhat below normal, compared to the months of June and July when rainfall was more than double the normal rain.

The third lowest level was 645.7 feet, 14.3 ft below full, near the middle of September 2002, not many years ago. The lake was full about 6 months later by the middle of March 2003. Rainfall at Clayton was about 9 inches above normal during that period. Rainfall data for the Clemson station could not readily be found for this time period but was probably similar to the Clayton station. The average release of water through the dam was about



Lake level summary for 2008: The December upturn (circled) is the result of recent rains and the Corps' near-zero outflow.

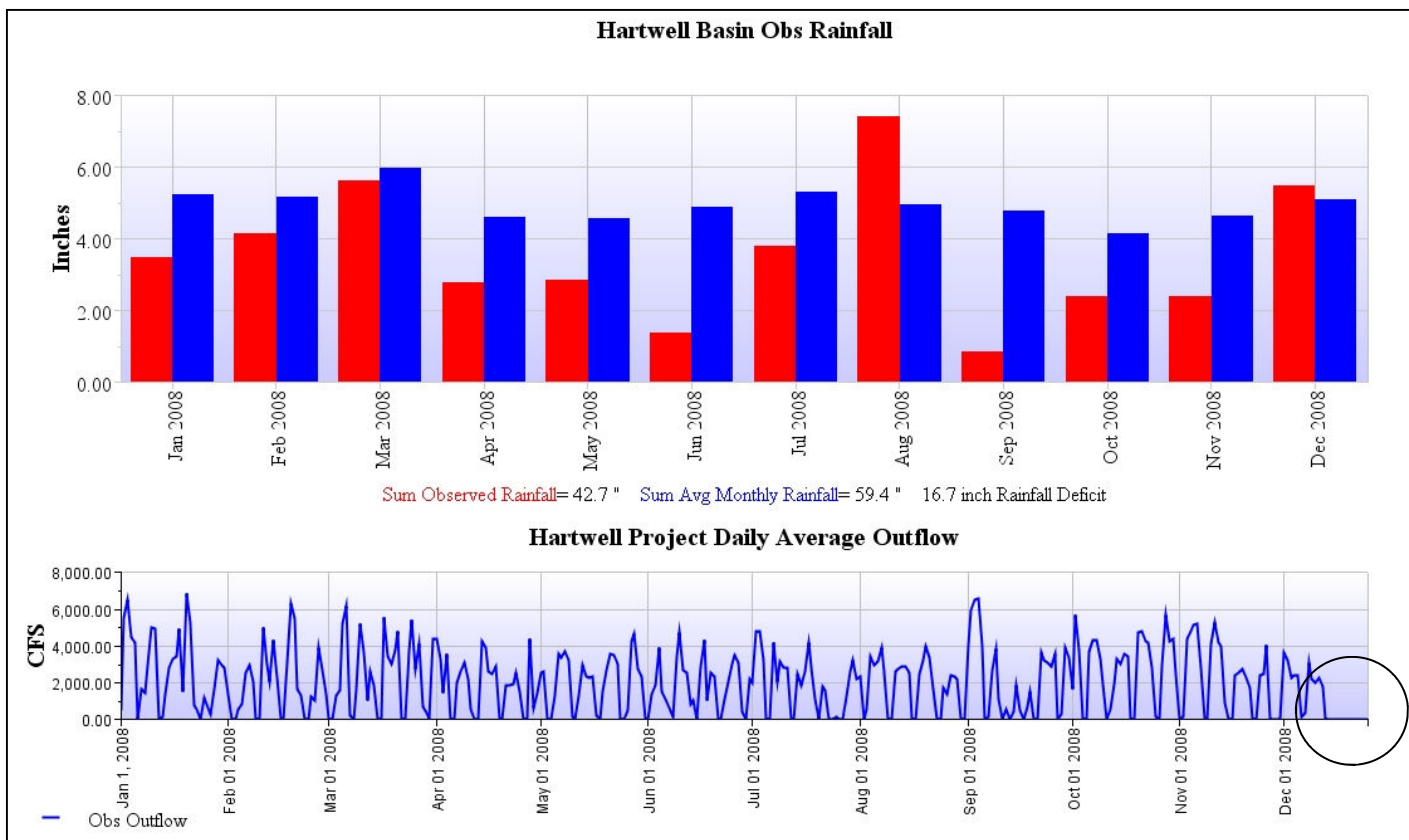
2,300 cfs for the same period, slightly more than the current 2,100 cfs.

The above is a summary of the three lowest periods, except for the current period, in the history of Hartwell Lake. There have been other low periods not as severe as these three, but always a cause for concern. This is the nature of this type of lake that is designed for multiple purposes such as flood control, power generation, water supply, downstream flow maintenance, recreation, etc.

A very significant factor for which it is difficult to get informa-

of 3,600 cfs per day from Thurmond; however the Corps has gotten temporary approval to lower this amount to the current release rate of 3,100 cfs. They plan to return to the 3,600 cfs rate in late January or February and once this happens, unless we have significant rainfall, Hartwell Lake will fall even faster than it is currently falling.

The good news is that we are entering the late winter and early spring season. This is when we expect to get significant rainfall, and history has proven this to be true as can be seen in the above



The top graph shows that in 10 of the last 12 months Hartwell has recorded below average rainfall. The bottom graph shows cyclic outflows from Hartwell. Notice that the last 10 days show a near-zero outflow as Corps applies new “adaptive management” plan.

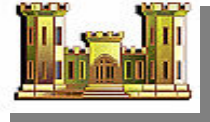
tion, is the influence of Lake Keowee. Approximately 21 percent of the Hartwell Lake drainage basin is controlled by Lake Keowee, which was built in 1971. That lake is being kept at or near full with practically no releases during the past few years. At least there are no data being published to indicate releases, and there was no information available for the past drought events.

Now for the hardest question: When will the lake recover and return to its full state? We’ve been in an extremely severe drought for the past couple of years, probably the worst in recorded history. The long range forecasts indicate it may continue into much of next year, although some of these forecasts are now indicating the drought may be nearing an end. In addition, at this time the lakes are below drought level 3, so about 80 percent of the water required for downstream flow maintenance in the Savannah River is being taken from Hartwell Lake. For the past year, the Corps of Engineers has maintained drought flow rates

examples. I have jokingly told people that within the next 4 to 6 months the lake will be at or near full again. Obviously, I can’t make this a prediction, but even normal rainfall will get us on our way. So don’t quote me on this, but let’s look forward to some rain this spring.

*Editor’s note: Since Vern wrote this article the lake level has increased about 2 ft. Two things have contributed to this dramatic increase; consistent, above average rainfall and “adaptive water management” by USACE. Since the basin area below has received more rainfall than the basin area above Hartwell Dam, the Corps has temporarily reduced outflow from Hartwell to 0 cfs as indicated on the line graph above (circled). Even though we are still in a serious drought (see “Ask The Corps” on page 6) the lake level has been coming up a few inches each day.*

# ASK THE CORPS....



**Question:** We already have our dock permit but the lake level is so low that installers can't get to our site. Can we have an extension of the last day to install?

**Answer:** Yes! Because of ongoing drought conditions, Col. Edward J. Kertis, Commander of the U.S. Army Corps of Engineers' Savannah District, has extended dock installation dates on Hartwell Lake to Jan. 1, 2010. Docks for which permits were issued after Jan. 1, 2009, must be installed within one year of the issuance date. The extension does not change the requirement for individuals with lots narrower than 75 feet wide to have made a permit application before Jan. 1, 2008. Properties with less than 75 feet of frontage no longer qualify for a dock permit. Col. Kertis advises, "I encourage individuals with lots adjacent to public property who still have deep water to proceed with dock installation. This will avoid a backlog of dock installations that will face dock builders once reservoir levels rise to normal or near-normal levels at the end of the drought."

For more information, contact Park Ranger Sandy Campbell at the Hartwell Project Office toll free at (888) 893-0678, ext. 315.

**Question:** I know that my business has suffered greatly from the extremely low water levels in the lake. Is any effort being made to determine the economic impact on businesses around the lake?

**Answer:** Yes! We (USACE) have formally entered into an agreement with six counties surrounding the District's Hartwell Lake to study impacts the reservoir has on local economies. The agreement will develop a study to determine economic changes within the six counties in relation to changes in reservoir levels. The cost of the study, \$211,522 will be shared equally by the group of counties and the federal government under the Planning Assistance to States program. The Savannah District has contracted with the Strom Thurmond Institute of Government and Public Affairs at Clemson University to conduct the study over 12 months. Anderson County, S.C. acted as the executive agent for the counties in reaching this agreement. The counties divided their share of the study's cost based on shoreline mileage. The study will be made public after an approximate two-month review and approval process and will be available in county offices and through the Savannah District homepage. For more information contact Billy Birdwell at (912) 652-5014/5279 or 24-hr cell (912) 677-6039 or email at [billy.birdwell@us.army.mil](mailto:billy.birdwell@us.army.mil)

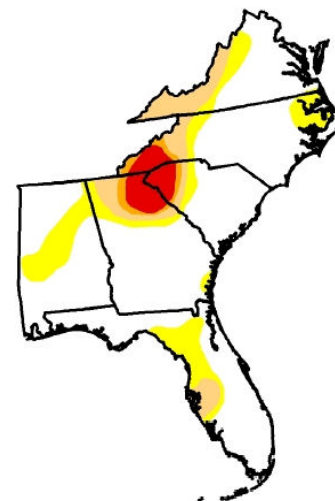
**Question:** A relative who lives on Lake Norman near Charlotte says that that lake is almost full. Why is Hartwell so low?

**Answer:** Although the drought status for the Hartwell portion of the Savannah River Basin has recently improved, we have been in an "Extreme" drought condition or worse for all of 2008. Even with recent rains and our "adaptive water management" it will take some time for the lake to recover. The map (right) shows that the worst part of the drought is centered over the Hartwell drainage basin. The Charlotte area and the Catawba-Wataree river system is located to the east of us and have received substantially more rainfall than we have. Lake Norman is maintained by Duke Power and under entirely different legislative mandates than Hartwell.

## U.S. Drought Monitor Southeast

December 23, 2008  
Valid 7 a.m. EST

	Drought Conditions (Percent Area)					
	None	D0-D4	D1-D4	D2-D4	D3-D4	D4
Current	70.7	29.3	14.3	6.0	4.3	0.0
Last Week (12/16/2008 map)	70.7	29.3	14.3	6.4	4.8	0.0
3 Months Ago (09/30/2008 map)	35.2	64.8	41.8	20.8	9.4	1.9
Start of Calendar Year (01/01/2008 map)	9.6	90.4	74.3	58.5	41.0	22.0
Start of Water Year (10/07/2008 map)	35.2	64.8	41.8	20.8	9.4	1.9
One Year Ago (12/25/2007 map)	9.0	91.0	76.9	62.3	47.8	36.2



**Intensity:**

- D0 Abnormally Dry
- D1 Drought - Moderate
- D2 Drought - Severe
- D3 Drought - Extreme
- D4 Drought - Exceptional

The Drought Monitor focuses on broad-scale conditions. Local conditions may vary. See accompanying text summary for forecast statements.

<http://drought.unl.edu/dm>



Released Wednesday, December 24, 2008

Author: Rich Tinker, CPC/NOAA

# NEWS FROM THE CORPS....

## 2008 Hartwell Lake Clean Up Campaign a Success

*Submitted by Ranger Tanya Grant, U.S. Army Corps of Engineers and Mike Massey*

The 28th annual Hartwell Lake Clean Up Campaign concluded on September 27, 2008 – National Public Lands Day - with an “Appreciation Picnic” provided for all volunteers. The clean up campaign started on August 15. Volunteers around the lake sign up to clean a section of the shoreline, parks or islands at their own convenience during the 6-week period. Trash bags are provided if desired and all participants are invited to the clean up appreciation day picnic. The clean up campaign and picnic are co-sponsored with the Lake Hartwell Association.



The Lake Hartwell Association sponsored live music from the Blue River Bluegrass Band and provided all of the picnic food. LHA also provided the materials for the children's project of painting a flower pot and planting a flower they could take



*Blue River Bluegrass Band provided entertainment.*



*LHA teamed up with USACE to thank volunteers by providing the picnic and gathering door prizes. (See the donor list on the next page.) LHA board members pictured here are Sec. Pam Thacker, Pres. Joe Brenner, Pat Goran, Dan Ray and Pres-elect Herb Burnham.*

105 groups (group size ranged from 1 – 70) with a total of 575 volunteers signed up to collect lake debris this year. The number of volunteers is about 100 less than average primarily due to limited publicity for the event caused by Corps budget reductions. Approximately 175 people attended the picnic held at Big Oaks Recreation Area. Other Hartwell Lake volunteers such as the Adopt-a-Park volunteers, Park Watch and water safety volunteers were invited to the picnic as well.



*Some of the youngest LHA members participated in a special activity. They planted a flower in a pot that they decorated and took their project home to watch it grow.*



*LHA members Don Hohman, Rufus Moss, Dan Ray and Herb Burnham begin grilling the burgers and dogs.*

home. LHA members solicited and collected the many great door prizes which are generously donated by area businesses.

In addition, the Corps distributed 130 t-shirts that were obtained through Georgia Rivers Alive which is Georgia's statewide clean up program.

The Hartwell Lake Clean Up is registered with Rivers Alive as well as Beach Sweep River Sweep of South Carolina.

The following are estimates based on clean up reports turned in by volunteers. We believe the numbers are slightly lower this year due to lake levels (less people going by boat and large objects are not near the current shoreline):



*The Hartwell Optimist Club served volunteers.*

**630 bags of trash collected**  
**12,454 lbs of trash collected**  
**150 miles of shoreline cleaned**

All participants will be mailed a certificate of appreciation, a thank you letter and a coupon for a fee free day in a federal park (provided through National Public Lands Day). All businesses who donated a door prize will receive a certificate of appreciation, a thank you letter and a Hartwell Lake public service decal. A thank you letter is also sent to the Lake Hartwell Association by the Corps for the efforts in promoting the lake clean up, obtaining donations for food and door prizes and cooking those delicious chili dogs and hamburgers at the picnic.

The Lake Hartwell Association would like to thank the following for their generous door prize donations. We ask you to support them: Anderson County Safe Kids Coalition, Anderson Keep America Beautiful, Applebee's Grill & Bar of Anderson, Big Water Marina, Captain Dave's Marine, Carolina Beer Company, Carolina Watercraft, Cateechee Golf Club, Corbett McGee's Irish Pub, Dairy Queen of Hartwell, Foothills Outfitters, Fuddruckers Restaurant, Galley Restaurant at Portman, Gordon's Marine, Grady's Great Outdoors, Harbor Light Marina, Hartwell Marina & Boat Sales, J's Marine & Camper Repair, Lara Kaufmann, Lake Hartwell Fishing & Marine, Lee's Marine, Longhorn Steak-

house, McDonald's- Anderson District Office, Outback Steakhouse, Pinnacle Bank – Hartwell, Pinnacle Bank – Lavonia, Red Lobster Restaurant, Siblings Restaurant, Strickland Marine Center, Sullivan's Metropolitan Grill, The Dock Depot, The Gray House, Tucker's Restaurant, Wal-Mart – Hartwell, West Marine.

## Let's Get Ready for Boating Next Year

*Submitted by Dan Ray*

Since the lake is at a record low level and going lower, most of us are through boating for this year. So let's be optimistic and get prepared for a great safe time on the water next year when lake levels are back up.

Here are a few things you may want to consider.

### For your boat:

- Look over your PFD's. Are they in good shape? Do you have enough to have one for every passenger you might have on board? You might consider getting one or more of those inflatables that are so much more comfortable. Do you have that throwable required for some vessels?
- Do you have an adequate first aid kit aboard?
- Do you have a serviceable swim ladder? If someone is injured, can you get him back on the boat?
- Do you have a reliable VHF and/or cell phone to call for assistance if you need it? With the lake at low levels, a depth sounder may be a wise addition to your electronics.
- Have you had your boat winterized? Have you added stabi-

lizer to your gas tank and filled it to minimize condensation in your fuel supply?

•

### For you and your crew:

- If your swimming abilities are limited, consider swim lessons at the Y. Maybe you should take a Life Saving course.
- If you haven't taken a boating safety course, check the LHA website for a class that fits your schedule. Local Power Squadrons, the Coast Guard Auxiliary, the South Carolina and Georgia Departments of Natural Resources offer them. Or you can go on line for a course.
- It's a good idea to get up to date on CPR methods and to be aware of the dangers of hypothermia. Check out the Red Cross for class availability.
- Check out your liability coverage situation. The Power Squadrons offer excellent boat policies at reasonable cost to members. BoatU.S. members have access to insurance plans that are highly recommended. Membership in BoatU.S. is available at a discount to LHA members. A feature included with membership is on the water towing and trailering assistance.



## Proposed Nuclear Power Plant Expansion On The Savannah River

Submitted by Bill Elmore

In March 2007, Southern Nuclear Operating Company (SNC) applied to the Nuclear Regulatory Commission (NRC) for an operating license for two new nuclear reactors for electric power generation at their Vogtle Site near Augusta, Georgia. SNC presently operates two reactors at this site for power generation. SNC is a consortium of companies which includes Georgia Power.

The Lake Hartwell Association, through our Technical Committee, has begun investigation into possible effects of this project on Hartwell Lake and the Savannah River basin. We have found that construction and operation of two more reactors at this site will not have any noticeable effect on Hartwell Lake when rainfall is normal and the lakes are near full, but they will impact lake levels during drought conditions. With four reactors operating at this site, Vogtle will be the single largest user of water on the Savannah River. LHA has prepared a Position Paper on this project which can be found on our website. All of our members are encouraged to read this paper for additional details of our concerns.

SNC proposes to withdraw up to a maximum of 83 million gallons per day of water from the river for cooling of the two new reactors. Only half of this water would be returned to the river with the balance being evaporated in cooling towers. The two reactors currently operating at the site use a similar amount of water. At average flow conditions in the Savannah River, all four reactors would normally consume approximately 1.5 % of the river flow. At Drought Level 3 flow conditions (3800 cfs), the four reactors would consume 3.4 % of the river flow.

The Lake Hartwell Association is not opposed to the operation of a nuclear generating plant in the Savannah River basin. If the proposed plant is required to meet future electric power demands in the region, we believe that a nuclear facility will have the least adverse environmental impacts of all the viable alternatives. We do, however, have a number of concerns about the proposed project which we believe should be addressed before NRC issues an operating license for Vogtle Units #3 and #4. The issues that we have with the project center around the fact that studies have not been done to assess what the current and future water demands in the entire Savannah River Basin will be. The Drought Contingency Plan developed by the Corps has proven to be inadequate, and environmental studies done by SNC and NRC failed to address any impacts of the project above Augusta, Georgia. Faced with this lack of information, we believe that it is impossible to predict how Vogtle will impact lake levels, but it is expected that a water consumption of this magnitude will result in a lowering of lake levels during drought conditions. During periods of normal flow in the river, the impact of Vogtle will be negligible; however, during a drought such as the one we are currently experiencing, the Vogtle water consumption will represent a significant fraction of the available supply.

LHA has learned that there is newer reactor technology available which could substantially reduce water use for reactor cooling. This reactor design is currently being evaluated by NRC, but it is not proposed for use by SNC at the Vogtle site. We think that it makes good sense during these times of diminished river flow and shrinking lakes to use reactors which require the smallest amount of our valuable resource.

There are also concerns about barge shipments up the Savannah River to deliver large reactor parts to the site. Such barge traffic has not been addressed in previous environmental studies. During the LHA fall meeting, Colonel Kertis with the Savannah District Corps of Engineers stated that dredging of the river channel would not be required for these shipments. However, flows larger than the Drought Level 3 flow may be needed to float the barges. SNC has already been required to go back and assess the environmental impacts of these barge shipments to the river.

LHA believes that the NRC should not issue an operating license for the Vogtle expansion until these issues are addressed and some protection is given to the lakes above Augusta. We intend to make our position known to the Nuclear Regulatory Commission by submitting these comments at the next public hearings on this project. We have been told that this may occur in the spring of 2009. There is a lengthy schedule for this project that could stretch out for years. We will continue to monitor the permitting process and provide updates to our members as needed.

## Scouts Involved in Shoreline Management

Submitted by Larry Dyck



Thanks to Boy Scout Troop 215 from Anderson, SC for their assistance in planting native grasses along

the shoreline of Lake Hartwell. The effort was part of a two year grant to enhance fish habitat on Lake Hartwell. Grant partners, in addition to the Lake Hartwell Association, were SC and GA Departments of Natural Resources, Georgia and South Carolina Bass Anglers Sportsman's Society (B.A.S.S.) Federation and the U.S. Army Corps of Engineers.

## LHA Supports Boat Ramp Extension Project

Submitted by Ruth Anne Maciag

Tim Marchbanks, avid fisherman and owner of The Bait Shop, said that he opened that shop so he could have the best bait



*LHA President-elect Herb Burnham presents Tim Marshbanks (left) with a check to support his ramp extension project.*

available for his own use. Now he's teamed up with another Hartwell fisherman, Larry Browning, of K & L Electronics, and others to help extend boat ramps that are currently closed. This effort is called the *Lake Hartwell Ramp Project*.

The group met with the Corps of Engineers to understand what needed to be done for the boat ramps, and have now agreed to what the Corps calls a challenge cost-sharing agreement. This agreement provides that Corps personnel will actually perform the labor to extend the boat ramps if Marchbanks and his group will provide the concrete.

Thomas Concrete has already agreed to provide the material at \$84/yard, a considerably reduced price, and now the Lake Hartwell Ramp Project is looking for donations to purchase this concrete.

Recently Lake Hartwell Association presented Tim Marchbanks and the *Lake Hartwell Ramp Project* with a check for \$2000 to help move the project along. Herb Burnham, president-elect of the Lake Hartwell Association, who gave Tim the check, said, "It's always nice to meet someone who sees a problem and takes the bull by the horns to create a solution."

The Corps has said they would be able to get to three to five ramps this season. Those ramps are in order of priority: Broyles Landing, Big Oaks, Friendship Landing, Hatton's Ford and then either Green Pond or River Fork. Work is currently being done at Broyles Landing.

There have been other donations from businesses and individuals but at the time of this writing more money is needed. There is more information about this project at their website ([www.klelectronix.com](http://www.klelectronix.com)), including pictures of progress and contact information for those who wish to donate.

## South Carolina Water Planning Legislation Update

Submitted by Mike Massey

LHA representatives are working with members of the South Carolina Legislature, namely Representative Don Bowen, SC District 8 – Anderson, and Senator Kevin Bryant, SC District 3 – Anderson, to revise and re-introduce the Comprehensive State-wide Water Management Planning Bill in 2009. The bill was introduced in 2008 in the House and Senate and received support and endorsements by about 50 house members.



*At the fall meeting of LHA Rep. Don Bowen enthusiastically supported the re-introduction of the Comprehensive Statewide Water Management Planning Bill. Sen. Kevin Bryant (not pictured) is also working to re-submit a similar bill in the SC Senate.*

The bill, however, was held up due to the significant negotiations and differing opinions on previously introduced water bills which prevented discussions on our bill.

This bill is expected to make major improvements to water planning in South Carolina and specifically to the Savannah River Basin. The major emphasis for the bill was to create independent water Basin Management Councils for each basin in the state. All our neighboring states now have them and

SC will falter in our ability to keep water in our upper basin unless we do a better job of basin planning ourselves.

We have recently had discussions and input from a number of water related industry representatives, and we are planning to get that input into the revised bill. We are very encouraged that, due to the more dire circumstances in South Carolina as a result of the drought and the attempt by North Carolina to implement an interbasin transfer of water out of the Broad River Basin, South Carolina legislators and industry representatives are more receptive to revising water planning in the state.

## LHA Website

Submitted by Vernon Saur

Have you been to the Lake Hartwell Association website yet? There is a lot of good information on it. You can find contact information for government officials. Click on "Contacts" drop-down menu. There's also a fairly new page for "Community and Business Partners." You can find all of this and much more at [www.lakehartwellassociation.org](http://www.lakehartwellassociation.org).

## Thank You LHA Community & Business Members!

Please support the businesses that support LHA “for the sake of the lake!” Their contact information can be found on the “Community & Business Partners” webpage at [www.lakehartwellassociation.org](http://www.lakehartwellassociation.org).

Anchor All Realty & Mortgage - Tammy Mobley  
 Anderson Regional Joint Water System - Scott Willett  
 Big Water Marina - Jane W. Davis  
 Bill Brissey Real Estate – Bill Brissey  
 Captain Dave's Boating World - David Strickland  
 Cateechee Golf Club - Pamela Camp  
 Closet Tailors of Anderson - Robert Colcolough  
 Coldwell Banker Fort Realty - Fort Oglesby  
 Currahee Club - Chris W Whitley  
 Custom Steel & Wood - Don Haynie  
 DALCO Custom Homes - Flay Dalrymple  
 Dock Depot & Marine Supply: Richard & Georgeanne Henshaw  
 Docks South LLC - Bill Griggs  
 Dr. Andrew Adams, DDS  
 Foxwood Hills POA - Bill Lewis, Mgr  
 Good Buy Good Bye Fine Furniture Consignment Susan Savage  
 GREENSpace Surfaces, LLC - Bill England  
 Harbor Light Marina - Larry Rich  
 Harding Waterfront Construction - Pete Harding  
 Hartwell Marina & Boat Sales - Brant Tew  
 Indian Creek Contracting - Lori Duke Jones  
 Ingrid Lee Realtors, LLC - Ingrid Lee  
 Interiors by Penelope – Penny Holst  
 Kroeger Marine Construction, Inc - Dave Kroeger  
 Lake Hartwell Sail & Power Squadron - Mary Orem  
 Lee's Marine LLC - Randy Lee  
 Leeward Landing Assn of Boat Dock Owners - Bobby Medlock  
 Mike Sanders Boat Storage - Michael W Sanders  
 Paradise Point Inc - William Roberts  
 Paul & Susan Meng  
 Phil Jewelers – Phil Silverstein  
 Portman Marina - Dave Freeman  
 Robert & Connie Banks  
 Robert Foster & Rudolph Rudy O’Neal III Public Acc.  
 SC Homes and Lake Realty by Victoria McCormick  
 State Farm Insurance - Terence Roberts  
 Superior Dock Systems - Horace McGee  
 Swaney’s Point Association - Danny Shook  
 T & M Custom Docks - Donnie Thacker  
 T N Construction - Thad Strickland  
 The Hartwell Sun - Robert Rider  
 USACE Hartwell Project - Tanya Grant  
 View Point Lot Owners Assn.  
 William M. Callahan, DDS

## LHA Membership: Welcome Aboard & Thank You!

Thanks to all our members for your continued generosity and support of LHA’s efforts to protect Lake Hartwell’s water resources, especially during this historic drought.

Please welcome the following members who have joined LHA since our last newsletter:

### New Family Memberships

Oliver & Gayle Bennett, Joe B. Bowen Jr., Fred & Beth Burdick, Randy & Chandra Cisson, Libby Cornett, Mr. & Mrs. Doug Crawford, Jerry & Nancy Davis, William & Norma Davis, Tom & Jan Diamond, Joseph "Skip" Francis Jr., Lamar Houston, Dempsey Kirk, Eyal & Lisa Kishoni, Frank & Jane Limehouse, Karen R. Lloyd, Jorge & Sherron Martinez, Doug Massingill, Ed & Lona McCall, Frank & April McTier, Jim & April Murphy, Colleen & Carl Oberg, Mr. & Mrs. Alvaro L. Perea, Steven & Margaret Phillips, Maureen Deloach & Peter Sayeski, Don & Terre Pratt, Jim & Brenda Ramsey, James & Pamela Rogers, Randy & Janet Rollins, Ken & Melinda Schweer, Randy & Rusty Spence, Mr. & Mrs. Michael Stoneciphers, Phil & Sally Swaringen, Em Thaiss, Scott & Helen Vanvick, Joy Wagner, Perry & Virginia Wilkes, Arthur & Roswitha Yenawine, Douglas G. Young.

### New Business Memberships

Bill Brissey Real Estate – Bill Brissey  
 William M. Callahan, DDS – Bill Callahan  
 Phil Jewelers – Phil Silverstein

### Member Donations to LHA

Greg & Paige Ashmore, Wayne Bond, John & Jean Bowen, Fred & Jan Bruce, J. William Butler, Alex & Jaynie Dominguez, Larry & Cecile Dyck, James W. Hellams, Mark Howell, Tammy & Derek Hutchison, Jim Hipkens & Rob Lamy, Jerome & Jeanne Larson, Robert Lord, Thomas & Dottie Martin, Harold Martin, Randall Martinez, William Mclay, Thomas Moody, Dan & Jill O’Connor, Jim Pearson, Frankie Pettit, Don & Terre Pratt, James & Pamela Rogers, Riley & Becky Stephens, Mr. & Mrs. Robert Taylor.

LAKE HARTWELL ASSOCIATION, Inc.  
P. O. Box 312  
Fair Play, SC 29643

NONPROFIT ORG  
U.S. Postage  
**PAID**  
Greenville, SC  
Permit # 1371



Email address: [membership@lakehartwellassociation.org](mailto:membership@lakehartwellassociation.org)  
Web Site: <http://www.lakehartwellassociation.org>

LAKE HARTWELL ASSOCIATION MEMBERSHIP APPLICATION  
P.O. Box 312; Fairplay, SC 29643

*Winter  
2009*

Membership Information: Check  all that apply

New    Renewal    Address change   Amount Paid \_\_\_\_\_ Date \_\_\_\_\_

Family \$25    Community, Association or Business \$100  
 Gift Membership    Additional Donation \_\_\_\_\_

Name \_\_\_\_\_

Spouse's Name \_\_\_\_\_  
(Family Membership Application Only)

Mailing Address \_\_\_\_\_

City \_\_\_\_\_ State \_\_\_\_\_ ZIP \_\_\_\_\_

Phone (H) \_\_\_\_\_ (W) \_\_\_\_\_

E-Mail \_\_\_\_\_

Occupation(s): Yours \_\_\_\_\_ Spouse's \_\_\_\_\_  
(If retired, check here  and give former occupations above)

Lake Address & County \_\_\_\_\_  
(\*or Gift Recipient's address) \_\_\_\_\_  
\_\_\_\_\_

Give something back to the lake.  
Select a committee on which you  
would be willing to serve.

- Legislative
- Program
- Financial
- Lake Cleanup
- Safety
- Technical
- Membership
- Publications

Pay by Check: Make checks payable to **Lake Hartwell Association, Inc.** Send to address above.

⇒⇒⇒ Your membership fees and donations are fully tax deductible. ⇐⇐⇐